

# 63 Hummocky Lick at M-36

## Adopt-a-Stream Site Report

— Updated August 2021 —



### Site Condition: **GOOD/FAIR**

Hummock Lick is a small headwater creek that flows through a high quality fen system. At this site there are many kinds of bugs and several of them are sensitive. Given the unique setting of this creek, it is not clear if applying our rating system is appropriate in this circumstance. It has seemed to decrease in quality over the last 20 years.



Photo credit: Max Bromley

### Sampling Experience

#### Site Access: **MODERATE**

You have to park along a busy road, so be careful.

#### Team Operations: **EASY**

There is ample room for the team to move around.

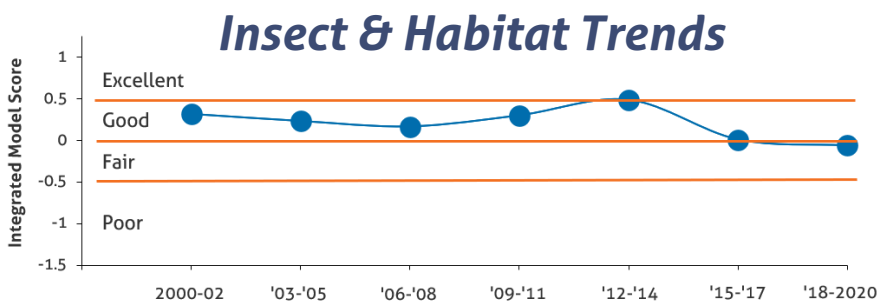
#### Collection: **MODERATE**

The creek is tiny and shallow, but it can get obstructed or hidden by thick bunches of plants.

### Measuring Stream Quality

#### Why bugs?

When a stream is rich in habitat variety, it will have many diverse kinds of bugs (called families). Some bugs (known as "sensitive") can only live in good quality streams. Thus, streams with sensitive families have the clean water and good habitat required by those bugs to survive.



### Monitoring Data

		2000 - 2009	2010 - 2019	2020 - 2030
Number of Site Visits	Fall	9	6	1
	Spring	9	9	0
	Winter	8	5	1
Average Insect Diversity		14.88	12.93	15
Average Sensitive Diversity		2	1.8	1
Average Winter Stonefly Families		0.375	0.4	0
Habitat	# of Surveys	2 (2000, 2006)	2 (2010, 2016)	0
	Summer Water T (F)	64 - 77 (2001)	Not Monitored	-
	Stream Width (ft)	3.49	5.14	-
	% Big Rocks	1.96	1.47	-
	% Rocks & Gravel	2.94	5.15	-
	% Sand	29.32	25.56	-
	% Muck	63.81	40.91	-

# Honey Creekshed (North)

## Adopt-a-Stream Creekshed Profile

— Updated January 2020 —



### Creekshed Profile

There are two Honey Creeks in the watershed. Honey Creek North is a branching stream with numerous tributaries and lakes. The main branch flows for 11 miles starting in agricultural fields, through the Pinckney Recreation Area, and finally ending at Portage Lake and the Huron. There are 13 lakes in Honey creekshed, most of which have a very natural shoreline with few houses built along the edges.

**79**

### Water Quality Parameters Grade

75-100	Healthy to Pristine	Land Use	A
		Natural Areas	A
50-74	Slightly Impacted	Stream Flow	Unknown
		Stream Habitat	A
25-49	Highly Impacted	Macroinvertebrates	B
		Fish Community	A
0-24	Extremely Disturbed	Phosphorus	B
		E. coli	A
		Total Suspended Solids	A
		Stream Temperature	B
		Conductivity	A
		Dams	C
		Contaminants	C

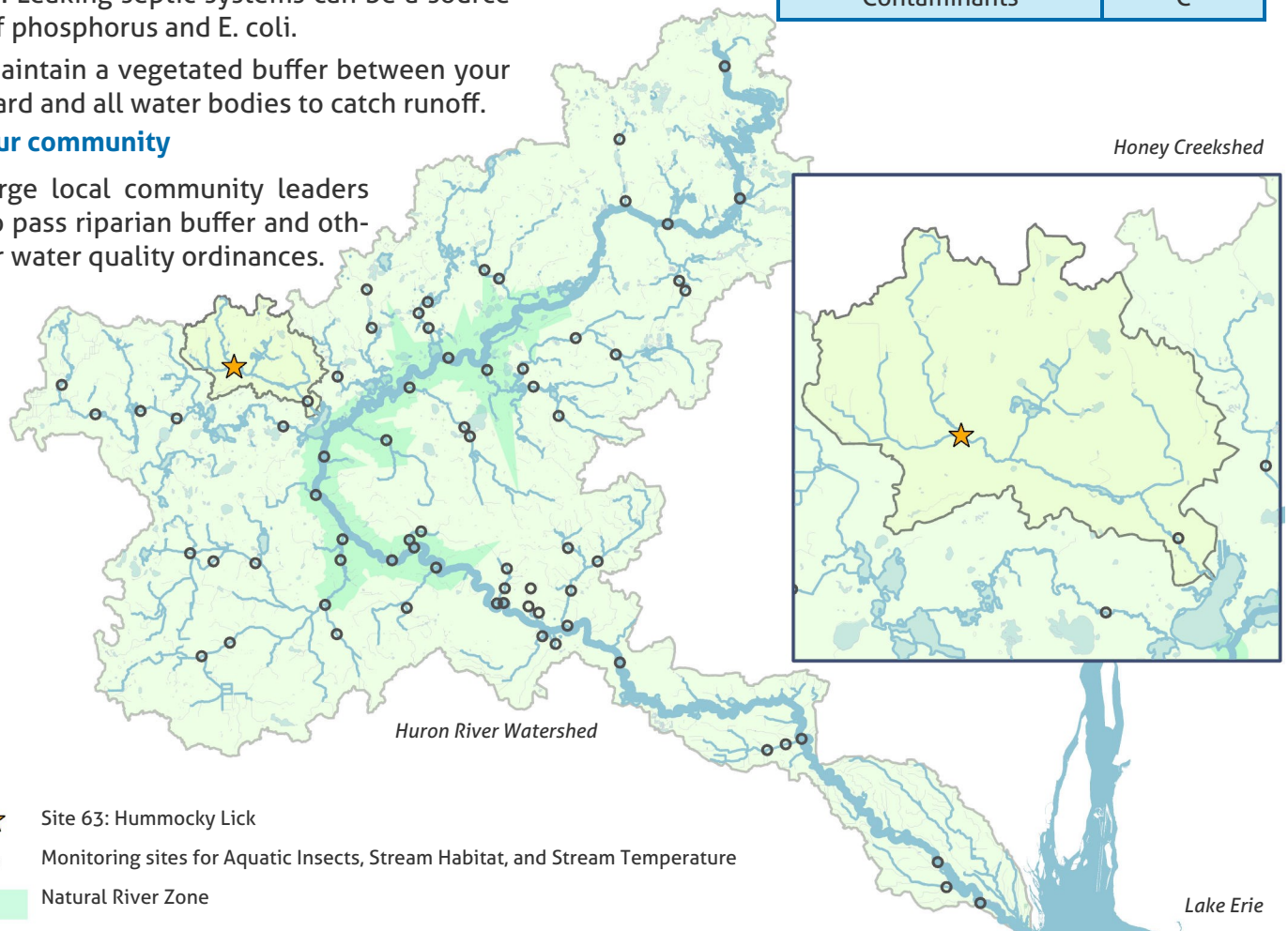
### What You Can Do!

#### At home

- Have your septic system checked regularly. Leaking septic systems can be a source of phosphorus and E. coli.
- Maintain a vegetated buffer between your yard and all water bodies to catch runoff.

#### In your community

- Urge local community leaders to pass riparian buffer and other water quality ordinances.



- ★ Site 63: Hummocky Lick
- Monitoring sites for Aquatic Insects, Stream Habitat, and Stream Temperature
- Natural River Zone

Lake Erie