

# 60 Port Creek at Armstrong Road

## Adopt-a-Stream Site Report

— Updated August 2021 —



### Site Condition: **POOR**

At this site there are very few kinds of bugs and none of them are sensitive. The stream banks are unstable and the habitat is poor. The health of this creek is far below an average stream of this size in the Huron River Watershed.



Photo credit: Max Bromley

### Sampling Experience

#### Site Access: **EASY**

Parking is easy, and there is no walk needed to get to the creek.

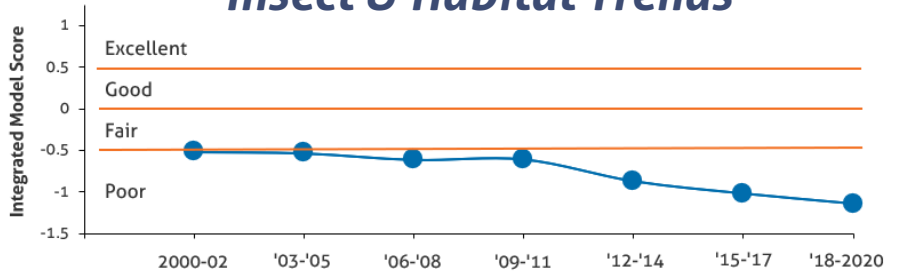
#### Team Operations: **MODERATE**

There is a grassy lawn nearby, though the creek itself has a wooded area to get through to get to the water.

#### Collection: **HARD**

There is a small slope to get into the creek, and it is mucky.

### Insect & Habitat Trends



### Measuring Stream Quality

#### Why bugs?

When a stream is rich in habitat variety, it will have many diverse kinds of bugs (called families). Some bugs (known as "sensitive") can only live in good quality streams. Thus, streams with sensitive families have the clean water and good habitat required by those bugs to survive.

### Monitoring Data

		2000 - 2009	2010 - 2019	2020 - 2030
Number of Site Visits	Fall	6	5	0
	Spring	7	3	0
	Winter	6	3	0
Average Insect Diversity		9.1	4.6	-
Average Sensitive Diversity		0.2	0.3	-
Average Winter Stonefly Families		0	0	-
Habitat	# of Surveys	2 (2000, 2006)	2 (2010, 2016)	0
	Summer Water T (F)	63 - 74.5 (2001)	Not Monitored	-
	Stream Width (ft)	9.1	10.5	-
	% Big Rocks	14.1	8.5	-
	% Rocks & Gravel	10.9	7.5	-
	% Sand	28.8	19.0	-
	% Muck	44.6	55.3	-

# The Lower Huron River

## Adopt-a-Stream Creekshed Profile

— Updated April 2021 —



### Creekshed Profile

The Huron River flows 125 miles from its headwaters at Big Lake to its mouth at Lake Erie. HRWC divides the river into five sections based on its geology, ecology, and hydrology. In this section, the Huron achieves a mature river form; it is very wide and slow-moving. There is an abundance of wetlands along its banks and the entire drainage area is flat.

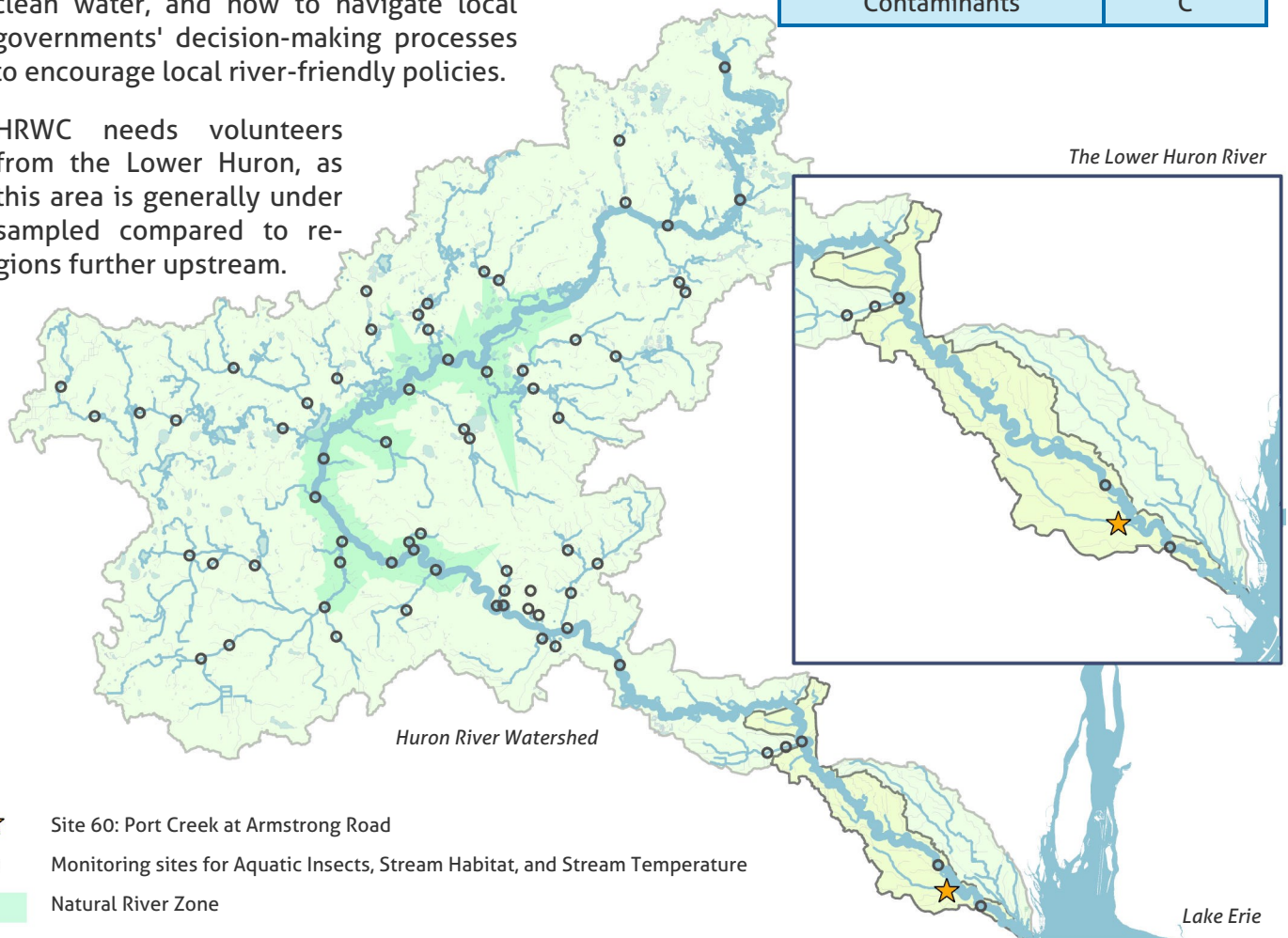
**51**

### Water Quality Parameters Grade

75-100	Healthy to Pristine	Land Use	C
		Natural Areas	B
50-74	Slightly Impacted	Stream Flow	C
		Stream Habitat	C
25-49	Highly Impacted	Macroinvertebrates	F
		Fish Community	B
0-24	Extremely Disturbed	Phosphorus	D
		E. coli	A
		Total Suspended Solids	A
		Stream Temperature	C
		Conductivity	C
		Dams	F
		Contaminants	C

### What You Can Do!

- Become a Change Maker! Chain Makers learn about the Huron River and its watershed, the impacts of development on clean water, and how to navigate local governments' decision-making processes to encourage local river-friendly policies.
- HRWC needs volunteers from the Lower Huron, as this area is generally under sampled compared to regions further upstream.



- ★ Site 60: Port Creek at Armstrong Road
- Monitoring sites for Aquatic Insects, Stream Habitat, and Stream Temperature
- Natural River Zone