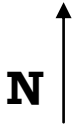


# STREAM MAP

Stream: \_\_\_\_\_ Site: \_\_\_\_\_

Date Map was drawn: \_\_\_\_\_ Name of Map Maker: \_\_\_\_\_

*Please consult back side of this paper for a list of quality assurance pointers when drawing the map.*



# Quality Assurance Questions

## Is your map up to snuff?

**If you can answer “yes” to the following questions, then you have made a great map that other volunteers can reliably use.**

- 1) Are you using a pencil?
- 2) Is all of your writing in printing, and not cursive?
- 3) Is north facing the top of the page? (In the case of east-west streams, please keep north at the top of the page anyway. Just make the picture smaller.)
- 4) Have you included a parking location?
- 5) Have you included nearby roads?
- 6) Have you included the direction of stream flow?
- 7) Have you included some major, unmovable, instream landmarks that are unlikely to be affected by changes in water level (large rocks, pipes, pools)?
- 8) Have you included a couple of major, unmovable landmarks near the stream (large trees, buildings, fire hydrants, big rocks)?
- 9) Have you included approximately 300 feet of stream length on the map?
- 10) If you are doing this map as a part of the summer Measuring and Mapping program, did you lightly draw your **first and last** transect?
- 11) Have you kept the map simple, free from too much writing, and easy on the eyes?
- 12) Do you think another volunteer would be able to understand your map and use it to park near the stream and find the stream?