

Appendix A.

Appendix C-2

Geomorphic Survey Form

The following images present the BANCS Survey Form as it appears on a mobile device as used in the field. This is the most recent version of the survey.

BANCS Survey

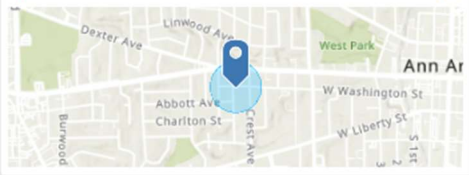
Site Information

Assessment ID

Start Date/Time

Observers
First initial. Last name

Starting Point of Assessment



Measured Bankfull (ft)
Reference bankfull pre-entered. Do not alter unless instructed.

Water depth (ft)
Measured to nearest tenth from thalweg (deep point)

✓

Screen 1.

BANCS Survey

Erosion Observations

Key Points

Which bank are you assessing? (left or right determined looking downstream)

Right
 Left
 Both
 Alternating

Study Bank Height (ft)

Root Depth
as a % of total bank height

Root Density
as a %

Bank Angle
Degrees. Undercut should be > 90.

Surface Protection
as a % of the full bank

✓

Screen 2.

BANCS Survey

Surface Protection
as a % of the full bank

Material

- Cobble
- Gravel
- Sand
- Clay
- Boulder
- Riprap
- Gravel/Loam Matrix
- Cobble/Loam Matrix
- Gravel/Clay/Loam Matrix
- Cobble/Clay/Loam Matrix
- Bedrock

Stratification

- No layers present
- Presence of stable layers
- Presence of unstable layers

Near-Bank Max Depth (ft)

Notes/Comments

✓

Screen 3.

BANCS Survey

- Gravel/Clay/Loam Matrix
- Cobble/Clay/Loam Matrix
- Bedrock


Stratification

- No layers present
- Presence of stable layers
- Presence of unstable layers

Near-Bank Max Depth (ft)



Notes/Comments

Trace length of bank surveyed
Please trace one bank, unless you observed both banks



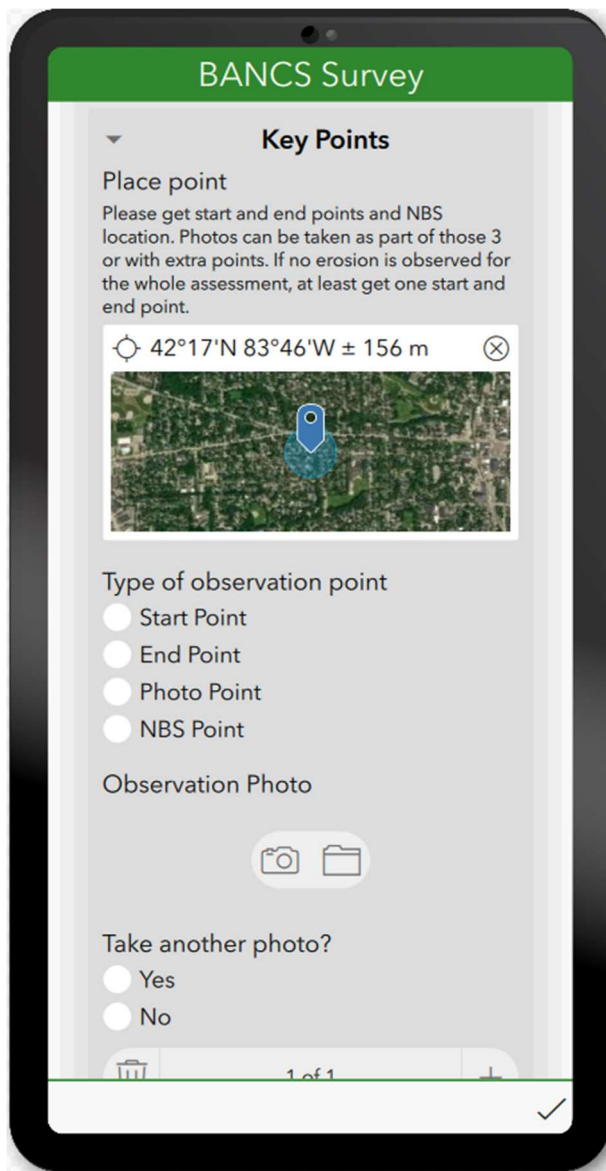
Bank length (ft)
Edit if measured by tape

Resulting BEHI Scores

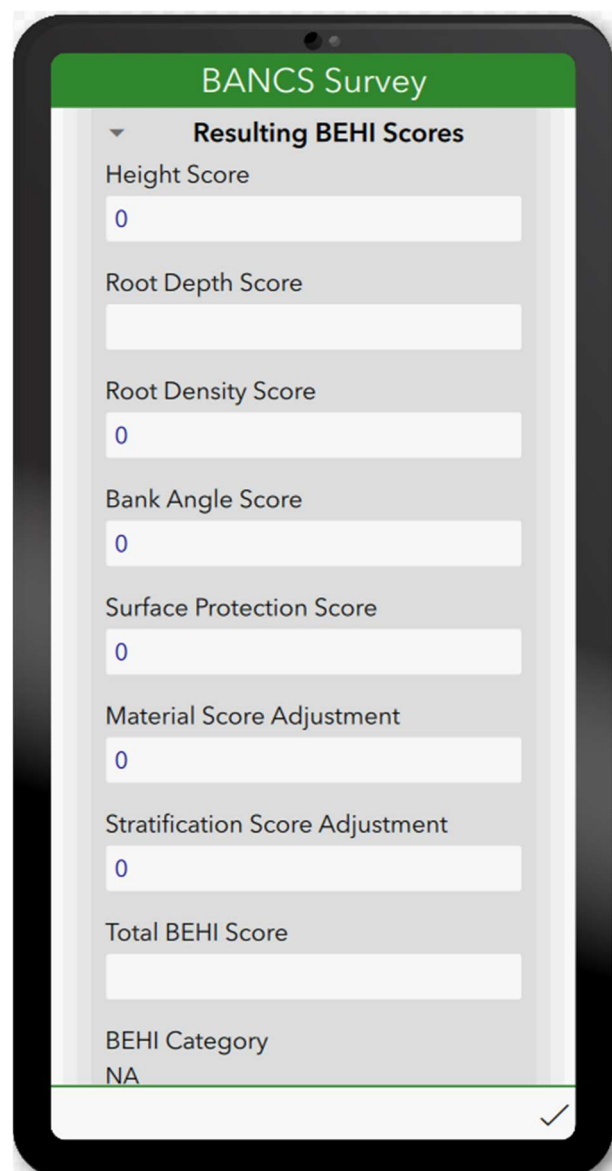
 1 of 1 

✓

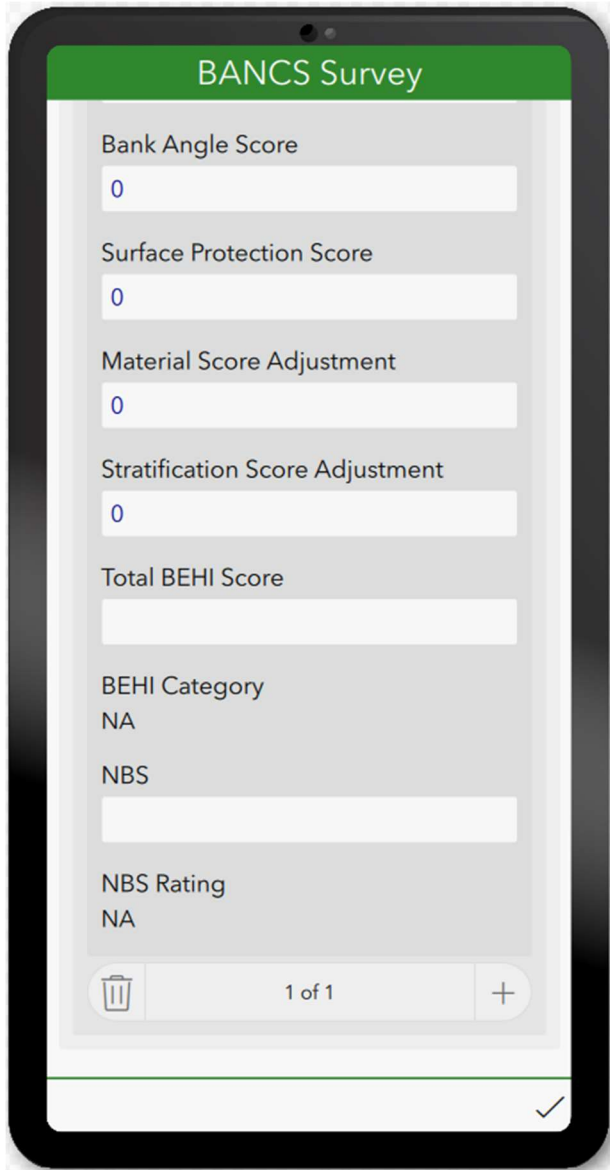
Screen 4.



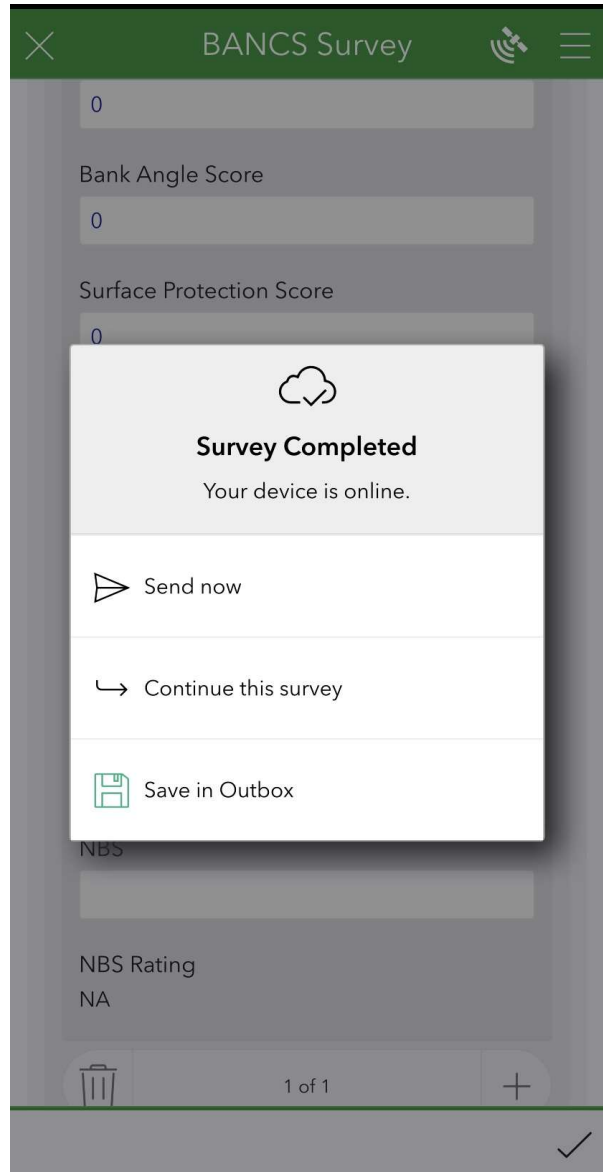
Screen 5.



Screen 6.



Screen 7.



Screen 8.