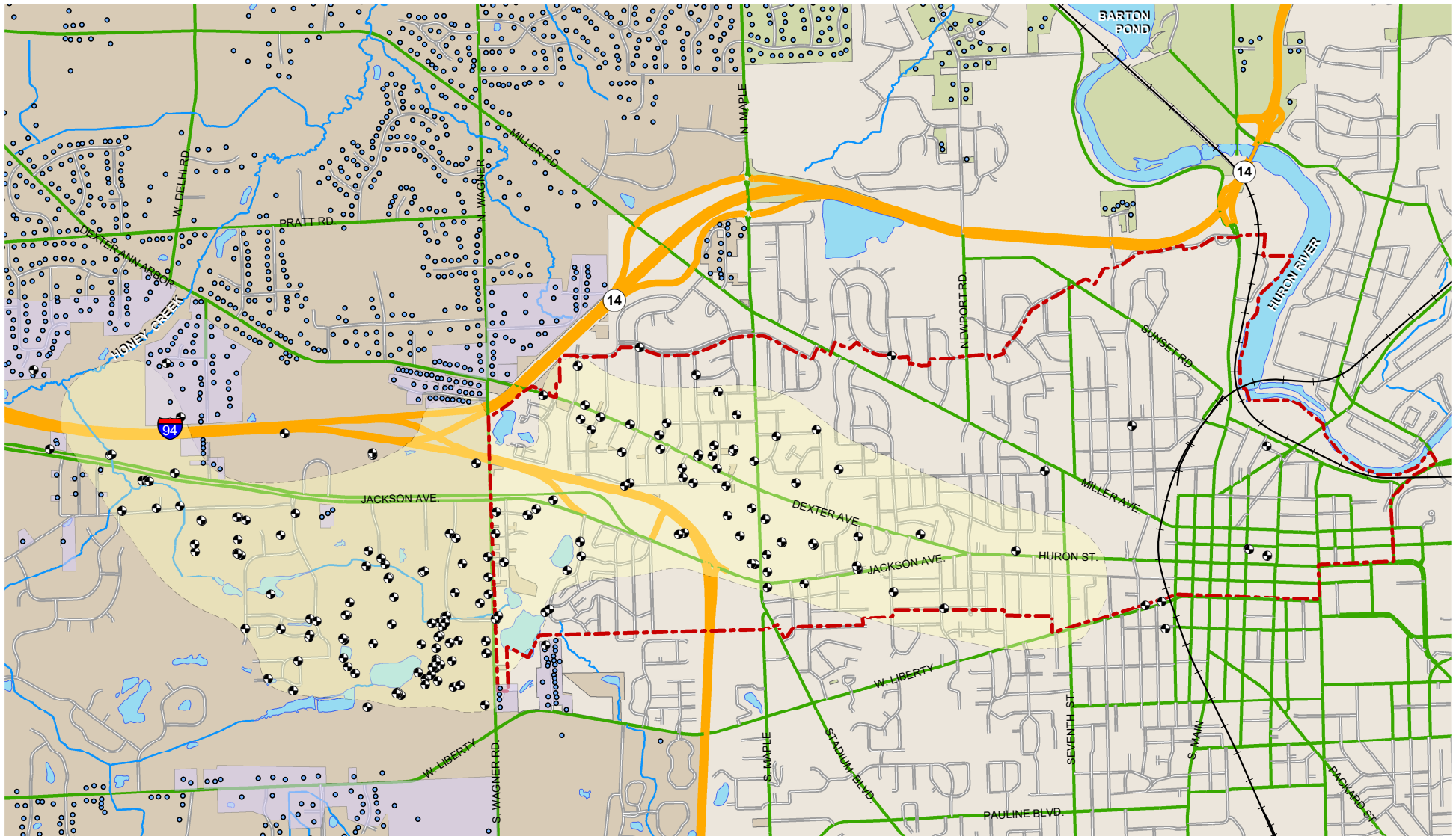
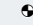

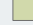
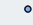






1,4-Dioxane Plume Map Washtenaw County, Michigan



KEY

- | | | | | | |
|---|--------------------|---|---|---|---|
|  | Monitoring Well |  | City of Ann Arbor |  | Ann Arbor Township / Barton Hills Village |
|  | Home/Business Well |  | Scio Township |  | Drinking Water Well Sampling Area |
|  | Prohibition Zone* |  | Estimated plume greater than 1 part per billion (ppb)** | | |

* Court-ordered area where the consumption or use of groundwater or installation of water supply wells is prohibited.

** A plume is a 3-dimensional distribution of contaminants in groundwater. Plume shape is effected by source spreading, geology, hydrology, and biological activities. The estimated plume boundary on this 2-dimensional map is unable to show the depth to contamination or thickness of the contaminated zone.

MAP PRODUCED BY:
Washtenaw County Health Department
Washtenaw County, Michigan

SOURCES:
MiGDL
MDEQ Database
Washtenaw County GIS

November 2019