

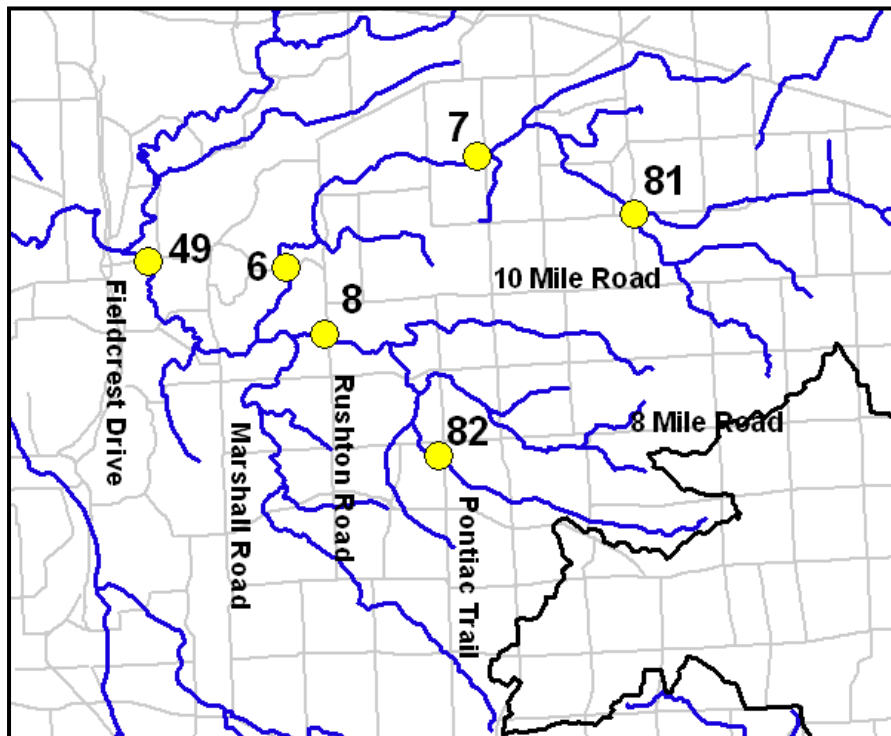
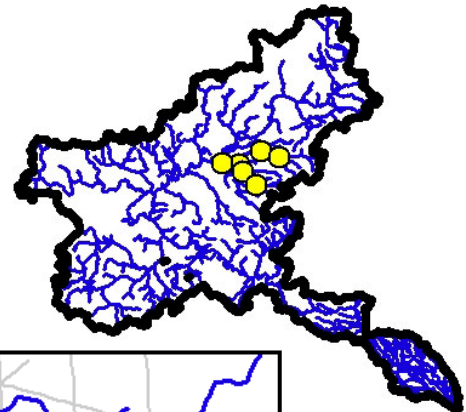


Adopt-a-Stream

Macroinvertebrate Monitoring Results

*April 2008 Data
and Long Term Trends*

Davis Creek Watershed



April 2008- Davis Creek Watershed

Site #	Location	Insects	EPT	Sensitive	5 year trend
81	Davis Creek:11 Mile Road	8	3	1	Stable
6	Davis Creek: Doane Road	12	6	1	Stable
7	Davis Creek: Pontiac Trail	14	5	2	Stable
8	Greenoak Creek: Rushton Road (April 2007)	5	2	0	Stable
49	S Branch Huron River: Silver Lake	12	8	2	Stable
82	Walker Creek: 8 Mile Road	15	8*	2	↑

Key:

- Counts refer to the number of families caught.
- EPT: Ephemeroptera-Plecoptera-Tricoptera (Mayflies-Stoneflies-Caddisflies)
- Shaded box was not sampled in this past River-Roundup but most recent sampling date is given.
- * = statistically significant trends (↓: decreasing; ↑: increasing) over the past 5 years at the 10% level.
- n/a= not available due to incomplete data.
- NEW: site has recently been introduced and has too few samples to detect trend.

Long-term Trends- Davis Creek Watershed

Site #	Location	Length (years)	Insects	EPT	Sensitive
81	Davis Creek:11 Mile Road	5	Stable	Stable	Stable
6	Davis Creek: Doane Road	14	Stable	Stable	↓ 4 (1994) 1 (2008)
7	Davis Creek: Pontiac Trail	14	Stable	Stable	Stable
8	Greenoak Creek: Rushton Road	11	Stable	Stable	↓ 1 (1997) 0 (2008)
49	S Branch Huron River: Silver Lake	10	Stable	Stable	Stable
82	Walker Creek: 8 Mile Road	5	Stable	Stable	Stable

Key:

- n/a= not available due to 5 or less years of data
- Length: number of years Adopt-a-Stream has been sampling this site
- Statistically significant trends (at the 10% level) over the years given are marked with arrows (↓: decreasing; ↑: increasing)
- Numbers given next to the arrows represent single data points; they give a flavor of the amount of change that has occurred over time.

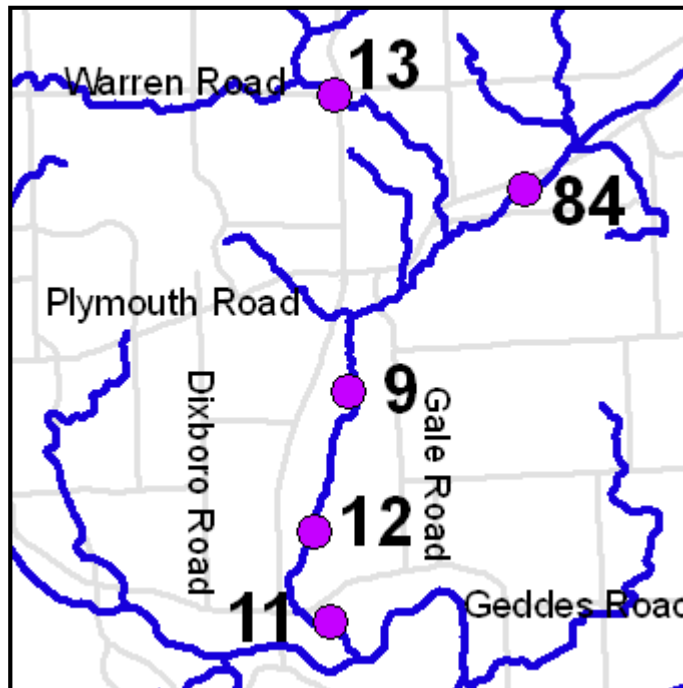
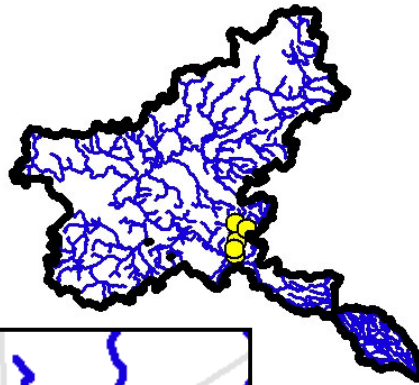


Adopt-a-Stream

Macroinvertebrate Monitoring Results

*April 2008 Data
and Long Term Trends*

Fleming Creek Watershed



April 2008-Fleming Creek Watershed

Site #	Location	Insects	EPT	Sensitive	5 year trend
9	Fleming Creek: Botanical Gardens (April 2007)	15	6	2	Stable
84	Fleming Creek: Galpin	16	8	1	Stable
11	Fleming Creek: Geddes Road	13*	5	2	↓
12	Fleming Creek: Radrick Farms (April 2007)	12	7	3	Stable
13	Fleming Creek: Warren Road	17	8	2	Stable

Key:

- Counts refer to the number of families caught.
- EPT: Ephemeroptera-Plecoptera-Tricoptera (Mayflies-Stoneflies-Caddisflies)
- Shaded box was not sampled in this past River-Roundup but most recent sampling date is given.
- * = statistically significant trends (↓: decreasing; ↑: increasing) over the past 5 years at the 10% level.
- n/a= not available due to incomplete data.
- NEW: site has recently been introduced and has too few samples to detect trend.

Long-term Trends- Fleming Creek Watershed

Site #	Location	Length (years)	Insects	EPT	Sensitive
9	Fleming Creek: Botanical Gardens (April 2007)	14	Stable	Stable	Stable
84	Fleming Creek: Galpin	4	Stable	Stable	Stable
11	Fleming Creek: Geddes Road	16	↑ 8 (1992) 13 (2008)	Stable	Stable
12	Fleming Creek: Radrick Farms (April 2007)	13	Stable	Stable	Stable
13	Fleming Creek: Warren Road	15	↑ 10 (1997) 17 (2008)	Stable	Stable

Key:

- n/a= not available due to 5 or less years of data
- Length: number of years Adopt-a-Stream has been sampling this site
- Statistically significant trends (at the 10% level) over the years given are marked with arrows (↓: decreasing; ↑: increasing)
- Numbers given next to the arrows represent single data points; they give a flavor of the amount of change that has occurred over time.

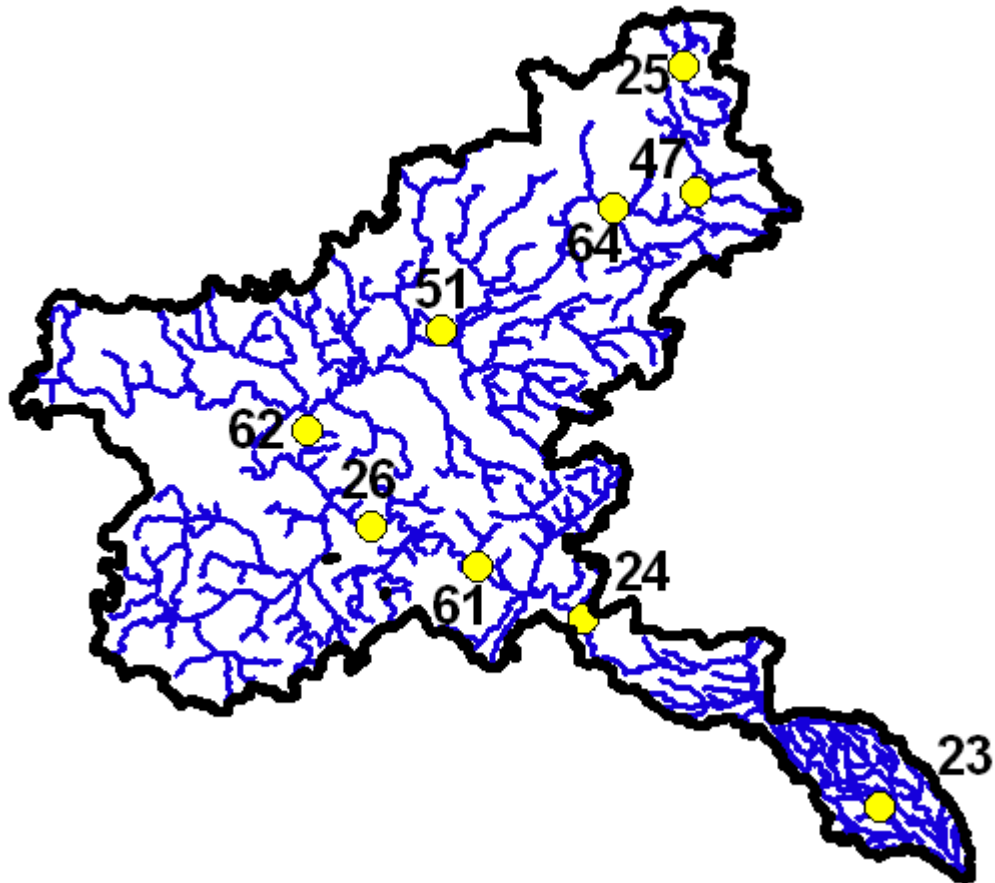


Adopt-a-Stream

Macroinvertebrate Monitoring Results

*April 2008 Data
and Long Term Trends*

Huron River Main Branch



April 2008- Huron River Mainbranch

Site #	Location	Insects	EPT	Sensitive	5 year trend
62	Huron River: Bell Road	15	7	1	Stable
47	Huron River: Commerce Road (April 2007)	10	5	1	Stable
24	Huron River: Cross Street	12	7	1	Stable
23	Huron River: Flat Rock (April 2007)	9	5	1	Stable
61	Huron River: Island Park	15	9	2	Stable
64	Huron River: Proud Lake Rec Area	15	8	1	Stable
51	Huron River: US-23 (Liv. Co)	19	10	3	Stable
25	Huron River: White Lake Road	19	10	5	Stable
26	Huron River: Zeeb Road (April 2007)	19	10	5	Stable

Key:

- Counts refer to the number of families caught.
- EPT: Ephemeroptera-Plecoptera-Tricoptera (Mayflies-Stoneflies-Caddisflies)
- Shaded box was not sampled in this past River-Roundup but most recent sampling date is given.
- * = statistically significant trends (↓: decreasing; ↑: increasing) over the past 5 years at the 10% level.
- n/a= not available due to incomplete data.
- NEW: site has recently been introduced and has too few samples to detect trend.

Long-term Trends- Huron River Mainbranch

Site #	Location	Length (years)	Insects	EPT	Sensitive
62	Huron River: Bell Road	8	Stable	Stable	Stable
47	Huron River: Commerce Road	10	Stable	Stable	Stable
24	Huron River: Cross Street	11	Stable	Stable	Stable
23	Huron River: Flat Rock	11	Stable	Stable	Stable
61	Huron River: Island Park	8	Stable	Stable	Stable
64	Huron River: Proud Lake Rec Area	7	Stable	Stable	Stable
51	Huron River: US-23 (Liv. Co)	10	Stable	Stable	Stable
25	Huron River: White Lake Road	14	↑ 20 (1994) 31 (2006)	↑ 10 (1994) 15 (2005)	↑ 5 (1994) 7 (2005)
26	Huron River: Zeeb Road	11	↑ 13 (1996) 21 (2006)	Stable	Stable

Key:

- n/a= not available due to 5 or less years of data
- Length: number of years Adopt-a-Stream has been sampling this site
- Statistically significant trends (at the 10% level) over the years given are marked with arrows (↓: decreasing; ↑: increasing)
- Numbers given next to the arrows represent single data points; they give a flavor of the amount of change that has occurred over time.

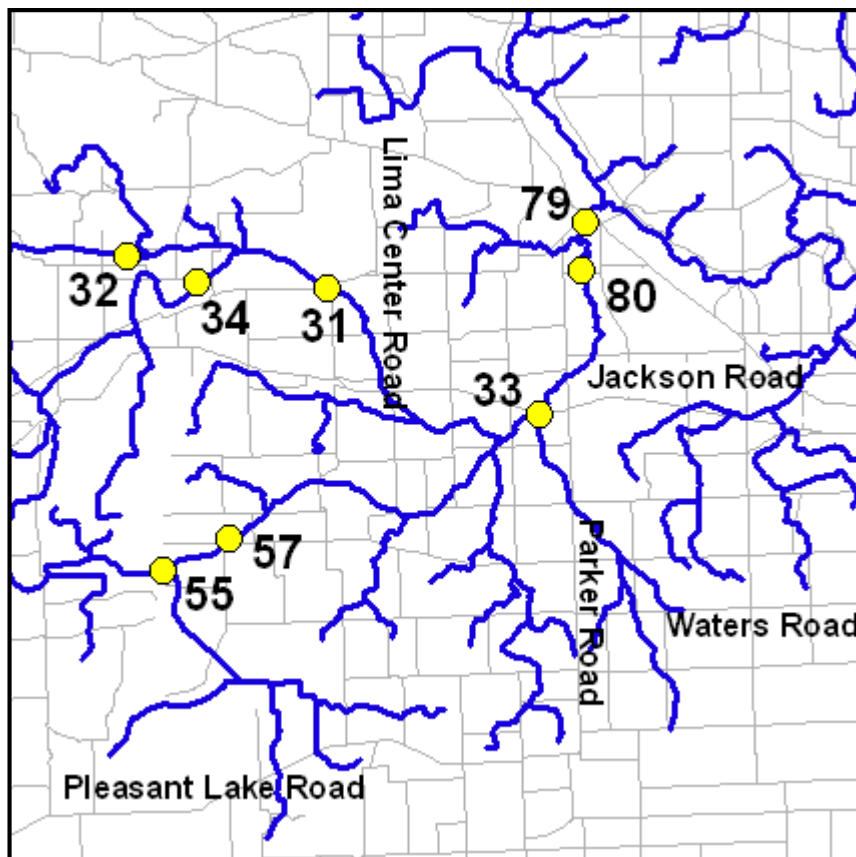
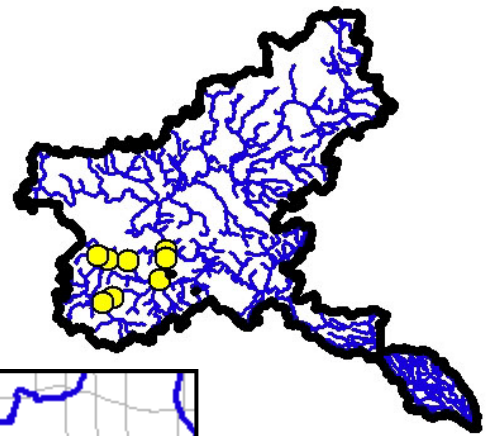


Adopt-a-Stream

Macroinvertebrate Monitoring Results

*April 2008 Data
and Long Term Trends*

Mill Creek Watershed



April 2008- Mill Creek Watershed

Site #	Location	Insects	EPT	Sensitive	5 year trend
31	Mill Creek: Fletcher Road (April 2007)	10	6	1	Stable
32	Mill Creek: Ivey Road	11*	6	2	↓
33	Mill Creek: Jackson Road	15*	8	2	↑
57	Mill Creek: Klinger Road (Sept. 2006)	8	2	0	Stable
34	Mill Creek: Letts Cr at M-52	15	4	1	Stable
55	Mill Creek: Manchester Road	10	4	1	Stable
80	Mill Creek: Shield Road	16*	7*	3	↑
79	Mill Creek: Warrior Park (Sept 2007)	14	7	2	Stable

Key:

- Counts refer to the number of families caught.
- EPT: Ephemeroptera-Plecoptera-Tricoptera (Mayflies-Stoneflies-Caddisflies)
- Shaded box was not sampled in this past River-Roundup but most recent sampling date is given.
- * = statistically significant trends (↓: decreasing; ↑: increasing) over the past 5 years at the 10% level.
- n/a= not available due to incomplete data.
- NEW: site has recently been introduced and has too few samples to detect trend.

Long-term Trends- Mill Creek Watershed

Site #	Location	Length (years)	Insects	EPT	Sensitive
31	Mill Creek: Fletcher Road	14	Stable	Stable	Stable
32	Mill Creek: Ivey Road	14	Stable	Stable	Stable
33	Mill Creek: Jackson Road	12	Stable	Stable	Stable
57	Mill Creek: Klinger Road	7	↓ 14 (1994) 8 (2006)	Stable	Stable
34	Mill Creek: Letts Cr at M-52	15	Stable	Stable	Stable
55	Mill Creek: Manchester Road	15	↑ 9 (1993) 20 (2006)	Stable	Stable
80	Mill Creek: Shield Road	5	Stable	Stable	Stable
79	Mill Creek: Warrior Park	4	Stable	Stable	Stable

Key:

- n/a= not available due to 5 or less years of data
- Length: number of years Adopt-a-Stream has been sampling this site
- Statistically significant trends (at the 10% level) over the years given are marked with arrows (↓: decreasing; ↑: increasing)
- Numbers given next to the arrows represent single data points; they give a flavor of the amount of change that has occurred over time.

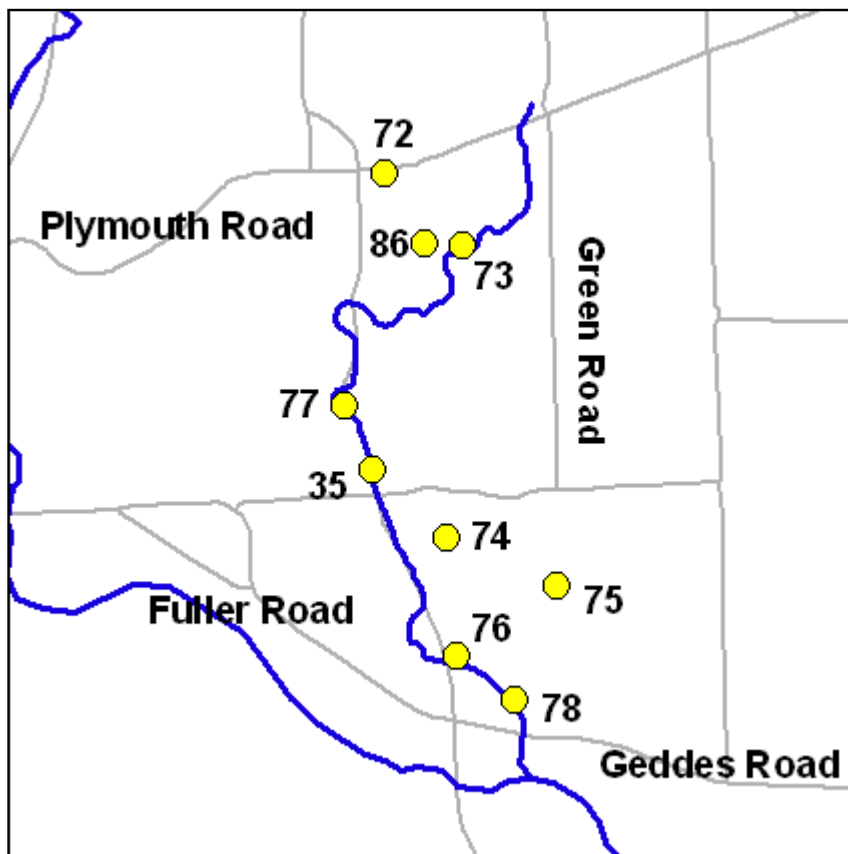
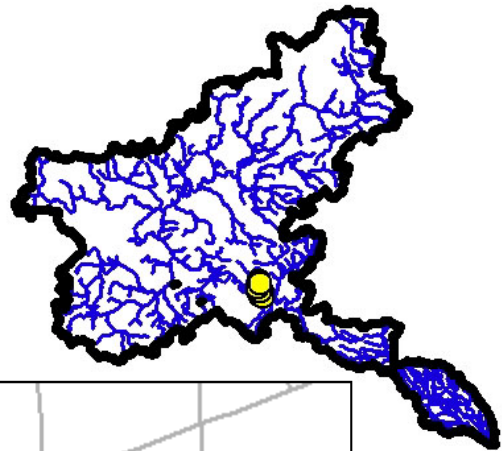


Adopt-a-Stream

Macroinvertebrate Monitoring Results

*April 2008 Data
and Long Term Trends*

Millers Creek



April 2008- Millers Creek Watershed

Site #	Location	Insects	EPT	Sensitive	5 year trend
73	Millers Creek (E Branch): Baxter Rd (April 2007)	6	0	0	2
75	Millers Creek (Trib): Green Road	3	0	0	Stable
74	Millers Creek (Trib): Lakehaven Ct	1	0	0	Stable
72	Millers Creek (W Branch): Plymouth Road	2	0	0	Stable
35	Millers Creek: Glazier Way (Sept 2007)	6	1	0	Stable
77	Millers Creek: Hubbard	3	0	0*	↓
76	Millers Creek: Huron Pkwy	4	0*	0	↓
78	Millers Creek: Meadows (Sept 2005)	4	1	0	n/a
86	Millers Creek: Pfizer South (April 2007)	3	0	0	NEW

Key:

- Counts refer to the number of families caught.
- EPT: Ephemeroptera-Plecoptera-Tricoptera (Mayflies-Stoneflies-Caddisflies)
- Shaded box was not sampled in this past River-Roundup but most recent sampling date is given.
- * = statistically significant trends (↓: decreasing; ↑: increasing) over the past 5 years at the 10% level.
- n/a= not available due to incomplete data.
- NEW: site has recently been introduced and has too few samples to detect trend.

Long-term Trends- Millers Creek Watershed

Site #	Location	Length (years)	Insects	EPT	Sensitive
73	Millers Creek (E Branch): Baxter Rd	5	Stable	Stable	Stable
75	Millers Creek (Trib): Green Road	6	↓ 9 (2002) 3 (2008)	Stable	Stable
74	Millers Creek (Trib): Lakehaven Ct	6	Stable	Stable	Stable
72	Millers Creek (W Branch): Plymouth Road	6	↓ 7 (2002) 2 (2008)	Stable	Stable
35	Millers Creek: Glazier Way	14	Stable	Stable	Stable
77	Millers Creek: Hubbard	6	Stable	Stable	↓ 1 (2002) 0 (2008)
76	Millers Creek: Huron Pkwy	6	Stable	↓ 2 (2002) 0 (2008)	Stable
78	Millers Creek: Meadows		n/a	n/a	n/a
86	Millers Creek: Pfizer South		n/a	n/a	n/a

Key:

- n/a= not available due to 5 or less years of data
- Length: number of years Adopt-a-Stream has been sampling this site
- Statistically significant trends (at the 10% level) over the years given are marked with arrows (↓: decreasing; ↑: increasing)
- Numbers given next to the arrows represent single data points; they give a flavor of the amount of change that has occurred over time.

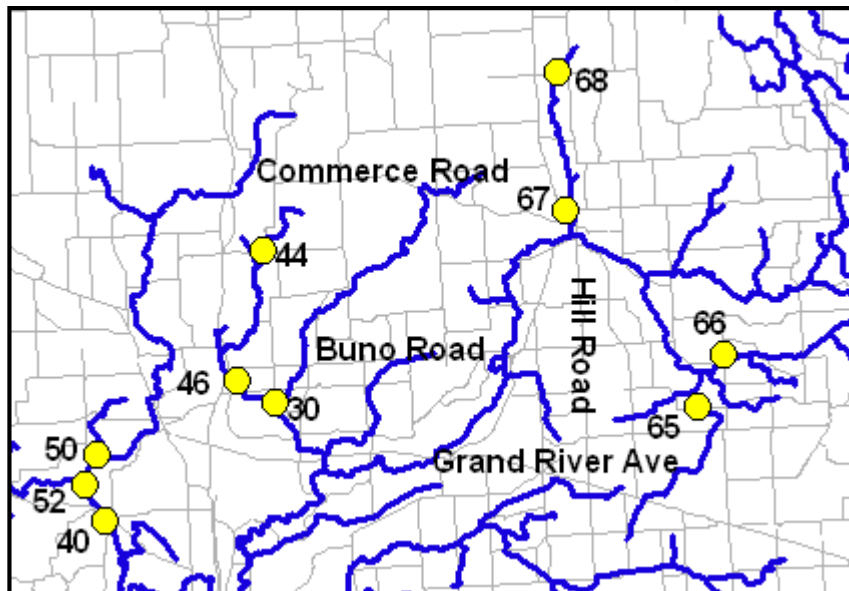
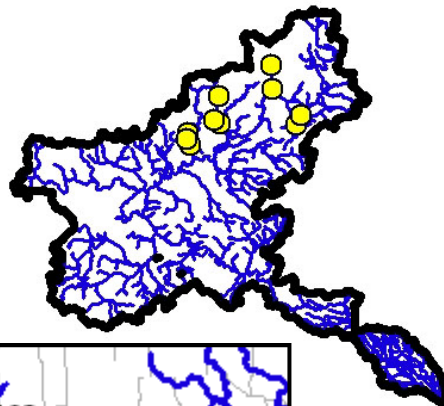


Adopt-a-Stream

Macroinvertebrate Monitoring Results

*April 2008 Data
and Long Term Trends*

Northeast Tributaries



April 2008- Northeast Tributaries

Site #	Location	Insects	EPT	Sensitive	5 year trend
30	Mann: VanAmberg Road	17	10	5*	↑
66	Norton Creek: Loon Lake Outlet (April 2006)	6	2	0	Stable
65	Norton Creek: West Maple Road	4	0*	0	↓
67	Pettibone Creek: Commerce Road	14	7	1	Stable
68	Pettibone Creek: Livingston Road	12	5	2	Stable
52	South Ore Creek: Bauer Road	20*	9	3	↑
40	South Ore Creek: Hamburg Road	4*	2	1	↓
50	South Ore Creek: Lake Ridge	15*	7*	0	↑
46	Woodruff Creek: Bruno Road	8*	6	2	↓
44	Woodruff Creek: Maxfield Road	16	7	1	Stable

Key:

- Counts refer to the number of families caught.
- EPT: Ephemeroptera-Plecoptera-Tricoptera (Mayflies-Stoneflies-Caddisflies)
- Shaded box was not sampled in this past River-Roundup but most recent sampling date is given.
- * = statistically significant trends (↓: decreasing; ↑: increasing) over the past 5 years at the 10% level.
- n/a= not available due to incomplete data.
- NEW: site has recently been introduced and has too few samples to detect trend.

Long-term Trends- Northeast Tributaries

Site #	Location	Length (years)	Insects	EPT	Sensitive
30	Mann: VanAmberg Road	13	Stable	↑ 4 (1996) 10 (2008)	Stable
66	Norton Creek: Loon Lake Outlet	5	n/a	n/a	n/a
65	Norton Creek: West Maple Road	8	Stable	↓ 2 (2000) 0 (2008)	Stable
67	Pettibone Creek: Commerce Road	7	Stable	Stable	Stable
68	Pettibone Creek: Livingston Road	7	Stable	Stable	Stable
52	South Ore Creek: Bauer Road	10	Stable	Stable	Stable
40	South Ore Creek: Hamburg Road	14	Stable	Stable	Stable
50	South Ore Creek: Lake Ridge	10	↑ 6 (1998) 15 (2008)	↑ 2 (1998) 7 (2008)	Stable
46	Woodruff Creek: Bruno Road	14	↓ 18 (1994) 8 (2008)	↓ 10 (1994) 6 (2008)	Stable
44	Woodruff Creek: Maxfield Road	12	Stable	Stable	Stable

Key:

- n/a= not available due to 5 or less years of data
- Length: number of years Adopt-a-Stream has been sampling this site
- Statistically significant trends (at the 10% level) over the years given are marked with arrows (↓: decreasing; ↑: increasing)
- Numbers given next to the arrows represent single data points; they give a flavor of the amount of change that has occurred over time.

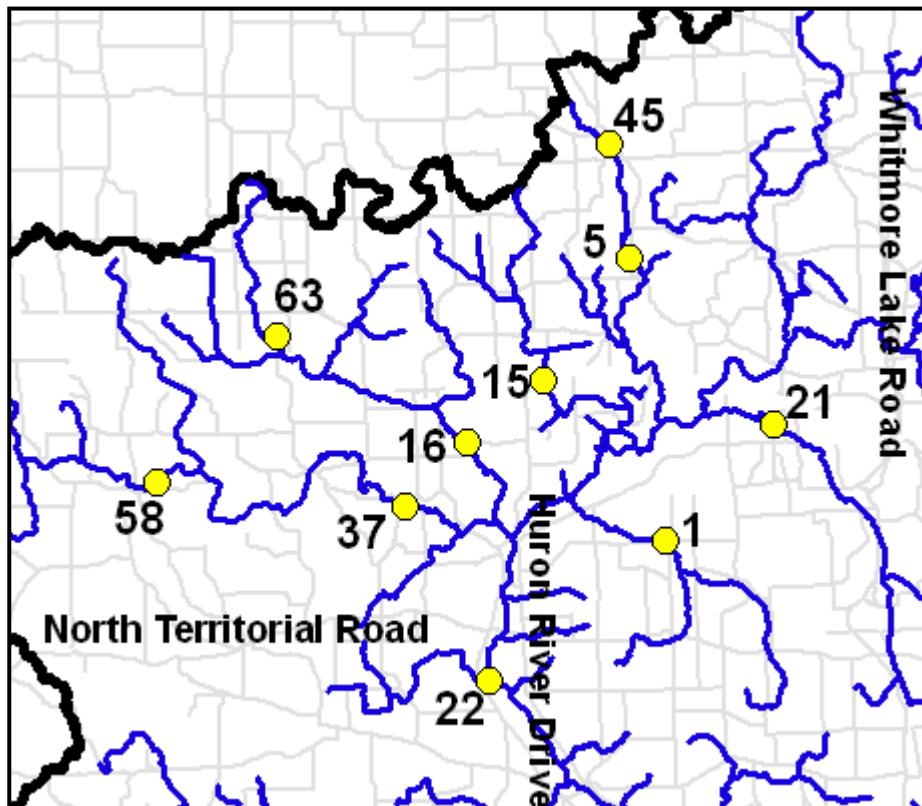
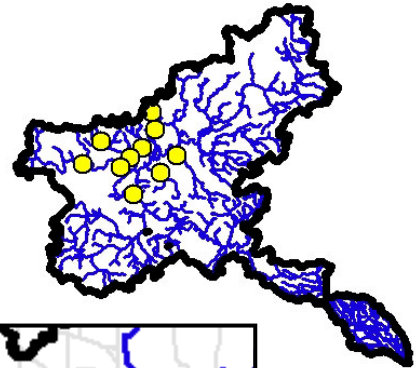


Adopt-a-Stream

Macroinvertebrate Monitoring Results

*April 2008 Data
and Long Term Trends*

Northwest Tributaries



April 2008- Northwest Tributaries

Site #	Location	Insects	EPT	Sensitive	5 year trend
1	Arms Creek: Walsh Road (April 2007)	10	5	2	Stable
45	Chilson Creek: Brighton Road (April 2007)	7	5	1	Stable
5	Chilson Creek: Chilson Road	9	5	1	Stable
15	Hay Creek	17	10	2	Stable
16	Honey Creek (N): Darwin Road	24	15	6*	↑
21	Horseshoe Creek	8	3*	0	↓
63	Hummocky Lick: M-36	15	9	4	Stable
22	Huron Creek: near the mouth	11	6	4	Stable
37	Portage Creek: Dexter-Townhall Road (April 2007)	20*	10*	2	↑
58	Portage Creek: Unadilla	8	5	1	Stable

Key:

- Counts refer to the number of families caught.
- EPT: Ephemeroptera-Plecoptera-Tricoptera (Mayflies-Stoneflies-Caddisflies)
- Shaded box was not sampled in this past River-Roundup but most recent sampling date is given.
- * = statistically significant trends (↓: decreasing; ↑: increasing) over the past 5 years at the 10% level.
- n/a= not available due to incomplete data.
- NEW: site has recently been introduced and has too few samples to detect trend.

Long-term Trends- Northwest Tributaries

Site #	Location	Length (years)	Insects	EPT	Sensitive
1	Arms Creek: Walsh Road	14	Stable	Stable	Stable
45	Chilson Creek: Brighton Road	10	Stable	Stable	Stable
5	Chilson Creek: Chilson Road	13	Stable	Stable	Stable
15	Hay Creek	12	Stable	Stable	Stable
16	Honey Creek (N): Darwin Road	12	↑ 15 (1996) 24 (2008)	↑ 6 (1996) 15 (2008)	Stable
21	Horseshoe Creek	12	Stable	Stable	↓ 1 (1994) 0 (2008)
63	Hummocky Lick: M-36	8	↑ 19 (2001) 13 (2007)	Stable	Stable
22	Huron Creek: near the mouth	12	Stable	Stable	Stable
37	Portage Creek: Dexter-Townhall Road	11	Stable	Stable	Stable
58	Portage Creek: Unadilla	8	Stable	Stable	Stable

Key:

- n/a= not available due to 5 or less years of data
- Length: number of years Adopt-a-Stream has been sampling this site
- Statistically significant trends (at the 10% level) over the years given are marked with arrows (↓: decreasing; ↑: increasing)
- Numbers given next to the arrows represent single data points; they give a flavor of the amount of change that has occurred over time.

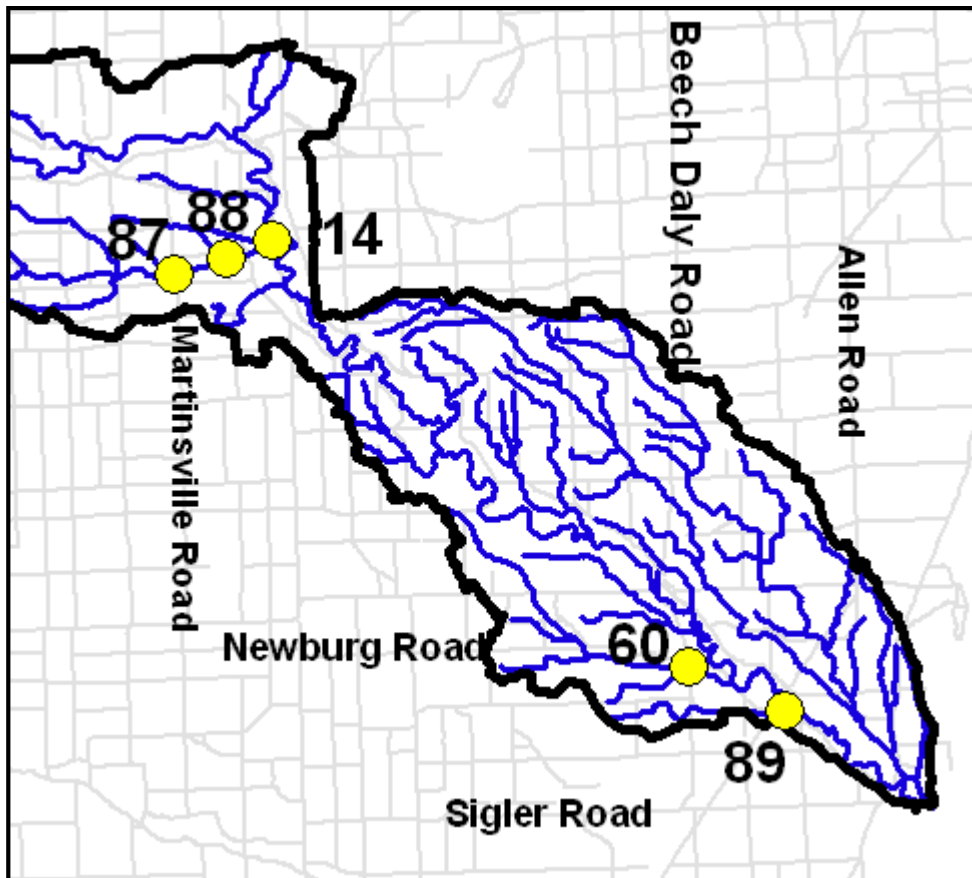
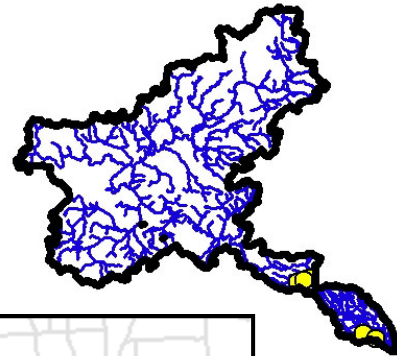


Adopt-a-Stream

Macroinvertebrate Monitoring Results

*April 2008 Data
and Long Term Trends*

Southeast Tributaries



April 2008- Southeast Tributaries

Site #	Location	Insects	EPT	Sensitive	5 year trend
89	Bancroft Noles Drain: Lebo Park	7	2	2	NEW
60	Port Creek: Armstrong Road	7	0	0	Stable
14	Woods Creek: L Huron Metropark	14	6	3	Stable
87	Woods Creek: Martinsville Road	9	4	2	NEW
88	Woods Creek: Renton Road	15	6	2	NEW

Key:

- Counts refer to the number of families caught.
- EPT: Ephemeroptera-Plecoptera-Tricoptera (Mayflies-Stoneflies-Caddisflies)
- Shaded box was not sampled in this past River-Roundup but most recent sampling date is given.
- * = statistically significant trends (↓: decreasing; ↑: increasing) over the past 5 years at the 10% level.
- n/a= not available due to incomplete data.
- NEW: site has recently been introduced and has too few samples to detect trend.

Long-term Trends- Southeast Tributaries

Site #	Location	Length (years)	Insects	EPT	Sensitive
89	Bancroft Noles Drain: Lebo Park	n/a	n/a	n/a	n/a
60	Port Creek: Armstrong Road	7	Stable	↓ 3 (2000) 0 (2008)	Stable
14	Woods Creek: L Huron Metropark	11	Stable	Stable	↑ 0 (1994) 3 (2008)
87	Woods Creek: Martinsville Road	n/a	n/a	n/a	n/a
88	Woods Creek: Renton Road	n/a	n/a	n/a	n/a

Key:

- n/a= not available due to 5 or less years of data
- Length: number of years Adopt-a-Stream has been sampling this site
- Statistically significant trends (at the 10% level) over the years given are marked with arrows (↓: decreasing; ↑: increasing)
- Numbers given next to the arrows represent single data points; they give a flavor of the amount of change that has occurred over time.

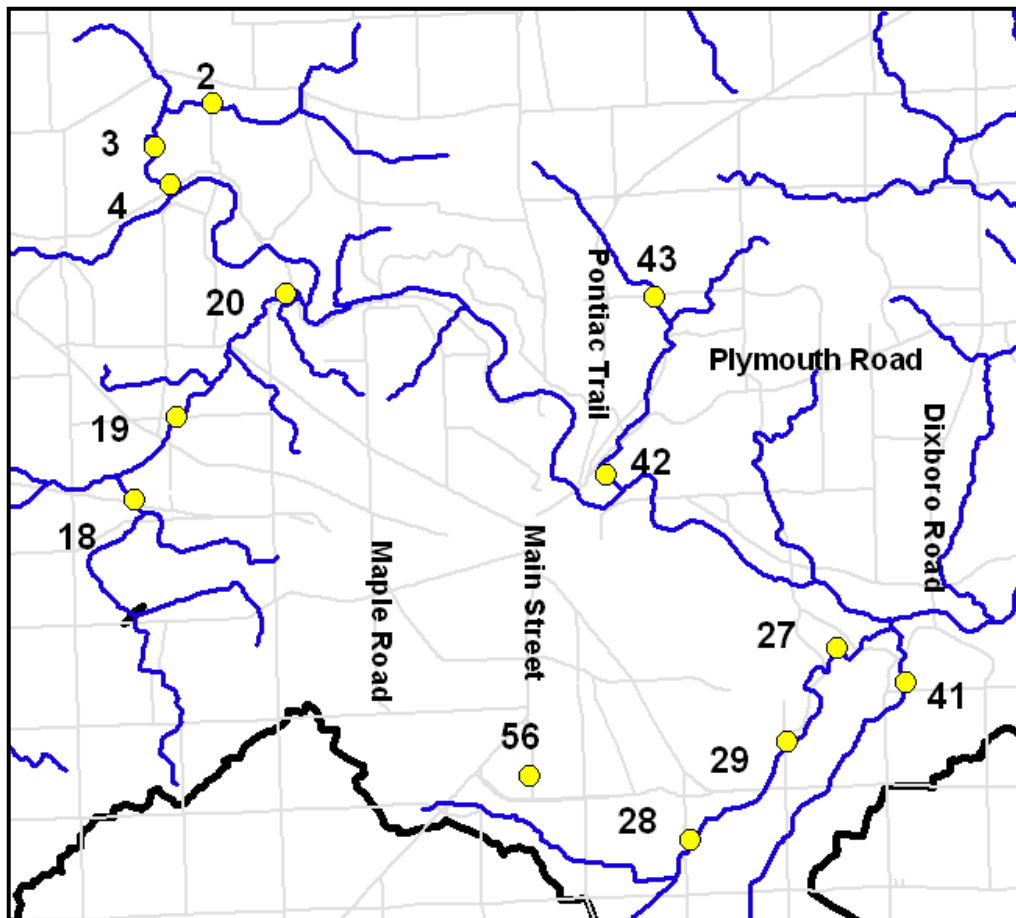
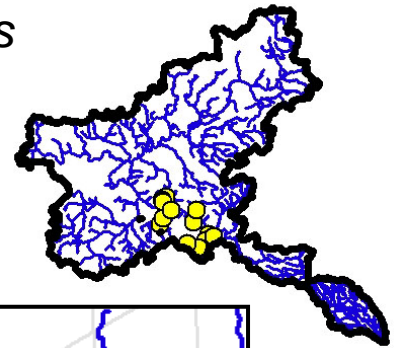


Adopt-a-Stream

Macroinvertebrate Monitoring Results

*April 2008 Data
and Long Term Trends*

Southwest Tributaries



April 2008- Southwest Tributaries

Site #	Location	Insects	EPT	Sensitive	5 year trend
2	Boyden Creek: Delhi	17	8	2	Stable
3	Boyden Creek: Golf Course	15	8	2	Stable
4	Boyden Creek: Huron River Drive	13*	6*	0	↑
18	Honey Creek: Jackson Road	8	3	0*	↓
19	Honey Creek: Pratt Road	5	3	1	Stable
27	Malletts Creek: Chalmers	2	2	1	Stable
28	Malletts Creek: I-94	10	1	0	Stable
56	Malletts Creek: Main Street	4	0*	0	↓
29	Malletts Creek: Scheffler	7	1	0	Stable
41	Swift Run: Swift Run	7	1	0	Stable
42	Traver Creek: Broadway (April 2007)	6	2	0	Stable
43	Traver Creek: Dhu Varren Road	16	8*	1	↑
20	Honey Creek: Wagner Road	4	2	1	Stable

Key:

- Counts refer to the number of families caught.
- EPT: Ephemeroptera-Plecoptera-Tricoptera (Mayflies-Stoneflies-Caddisflies)
- Shaded box was not sampled in this past River-Roundup but most recent sampling date is given.
- * = statistically significant trends (↓: decreasing; ↑: increasing) over the past 5 years at the 10% level.
- n/a= not available due to incomplete data.
- NEW: site has recently been introduced and has too few samples to detect trend.

Long-term Trends- Southwest Tributaries

Site #	Location	Length (years)	Insects	EPT	Sensitive
2	Boyden Creek: Delhi	15	Stable	↑ 3 (1993) 8 (2008)	Stable
3	Boyden Creek: Golf Course	13	Stable	Stable	Stable
4	Boyden Creek: Huron River Drive	15	Stable	Stable	Stable
18	Honey Creek: Jackson Road	15	Stable	Stable	Stable
19	Honey Creek: Pratt Road	15	Stable	Stable	Stable
27	Malletts Creek: Chalmers	15	Stable	Stable	Stable
28	Malletts Creek: I-94	16	Stable	↓ 3 (1992) 0 (2007)	Stable
56	Malletts Creek: Main Street	9	↓ 16 (1999) 4 (2008)	Stable	Stable
29	Malletts Creek: Scheffler	16	Stable	Stable	Stable
41	Swift Run: Swift Run	16	Stable	Stable	Stable
42	Traver Creek: Broadway (April 2007)	15	Stable	Stable	Stable
43	Traver Creek: Dhu Varren Road	16	Stable	Stable	Stable
20	Honey Creek: Wagner Road	14	Stable	Stable	Stable

Key:

- n/a= not available due to 5 or less years of data
- Length: number of years Adopt-a-Stream has been sampling this site
- Statistically significant trends (at the 10% level) over the years given are marked with arrows (↓: decreasing; ↑: increasing)
- Numbers given next to the arrows represent single data points; they give a flavor of the amount of change that has occurred over time.