



Land Preservation Millages in Washtenaw County Townships

Barry Lonik

Treemore Ecology & Land Services



Ann Arbor Township 2003



- ✦ 0.7 mills, 20 years
- ✦ \$6 million generated
- ✦ Passed with 80% support



Scio Township 2004



- ✦ 0.5 mills, ten years
- ✦ \$6 million generated
- ✦ Passed with 75% support



Webster Township 2005

PROTECT WEBSTER Vote YES on Proposals A, B & C
Tuesday, August 2nd

VOTE YES TO PROTECT WEBSTER FROM OVERDEVELOPMENT



We have a choice, but time is running out.



Which will be our legacy for future generations?

✦ 0.5 mills for five years

✦ \$850,000 generated

✦ First rural township, 70% support



Millage Renewals

- ✦ Webster Township 2009, 60% support
- ✦ Webster Township 2014, 73% support
- ✦ Scio Township 2012, 70% support
- ✦ Washtenaw County 2010, 58% support
 - ◆ Amended ordinance to specify farmland as a “natural resource”
 - ◆ 25% of renewal funds for farmland CEs



Motivations

✦ AAT: economics

✦ Scio: support planning

✦ Webster: counter development



Use of Funds

- ✦ Purchase of Conservation Easements
- ✦ Difference between development value and farmland value
- ✦ Land remains in private ownership
- ✦ Subject to permanent deed restriction
- ✦ Scio Township purchases title to land

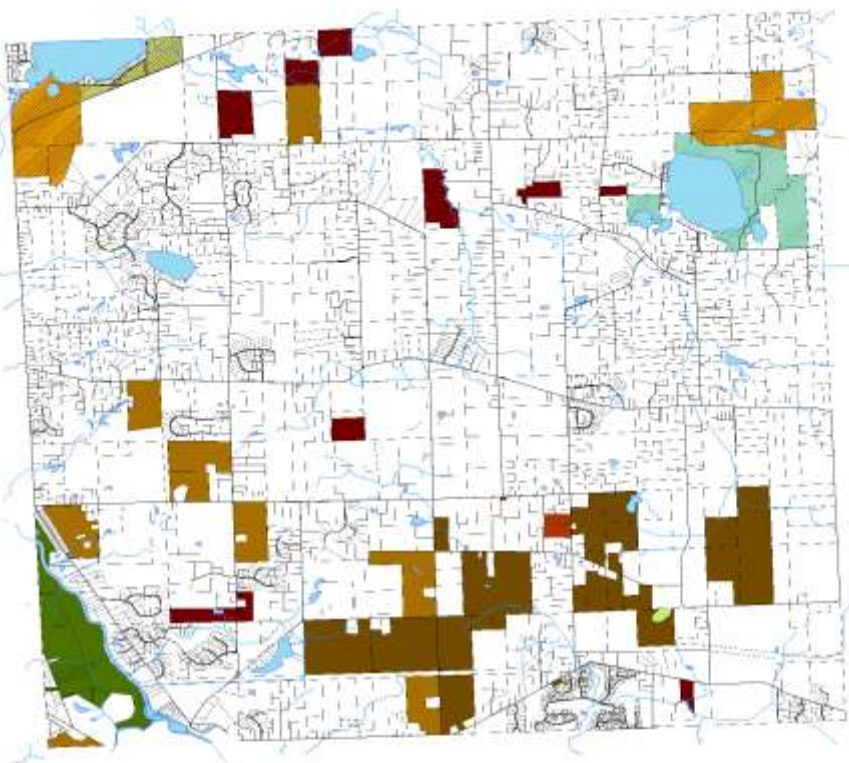


Protecting Water Quality

✦ Honey Creek—Scio Township

✦ Arms Creek—Webster Township





Protected Lands of Webster Township

Legend	
 Ann Arbor Greenbelt	 Private Open Lands-UM
 Huron-Clinton Metro Authority	 Township Property
 Legacy Land Conservancy	 Washtenaw County
 Private Open Lands- Base Lake	 Webster Twp. Easements
	 Washtenaw County Easement



Map prepared by Bill Sinkule
Updated: 8-4-2014

