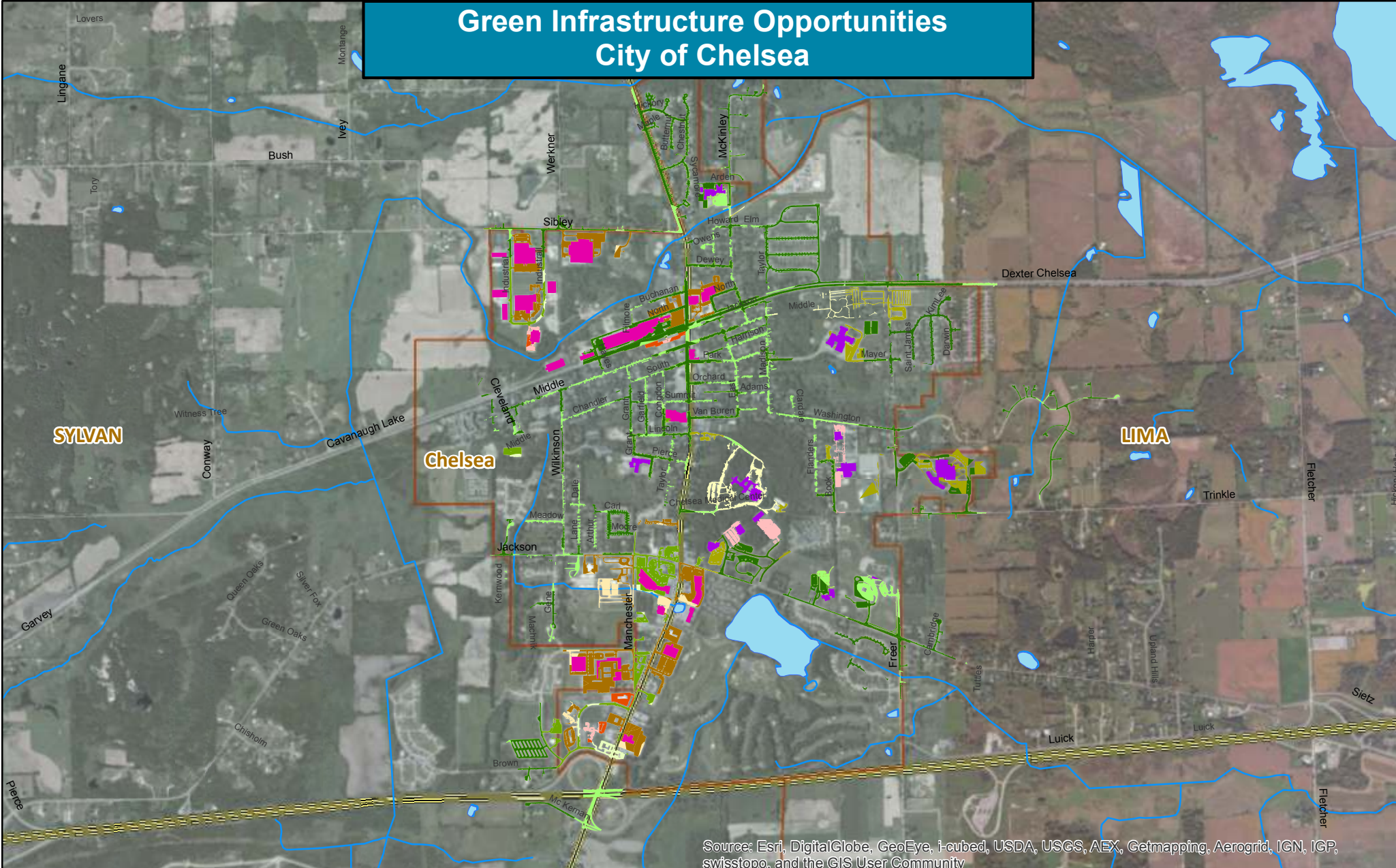


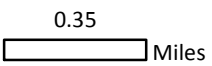
Green Infrastructure Opportunities City of Chelsea



Source: Esri, DigitalGlobe, GeoEye, i-cubed, USDA, USGS, AEX, Getmapping, Aerogrid, IGN, IGP, swisstopo, and the GIS User Community



Created February 27, 2014
Funding provided through a grant from the Michigan Department of Environmental Quality



Maps or GIS information may be obtained by contacting Ric Lawson
rlawson@hrwc.org, 734-796-5123



Opportunity Types

- | | | | |
|--|---|---|--|
|  | Green Streets - Residential Priorities |  | Large Lots - Government/Institutional Priorities |
|  | Green Streets - Residential |  | Large Lots - Government/Institutional |
|  | Green Streets - Commercial/Industrial Priorities |  | Large Lots - Commercial/Industrial Priorities |
|  | Green Streets - Commercial/Industry |  | Large Lots - Commercial/Industrial |
|  | Green Streets - Government/Institutional Priorities |  | Green Roof - Government/Institutional Priorities |
|  | Green Streets - Government/Institutional |  | Green Roof - Commercial/Industrial Priorities |