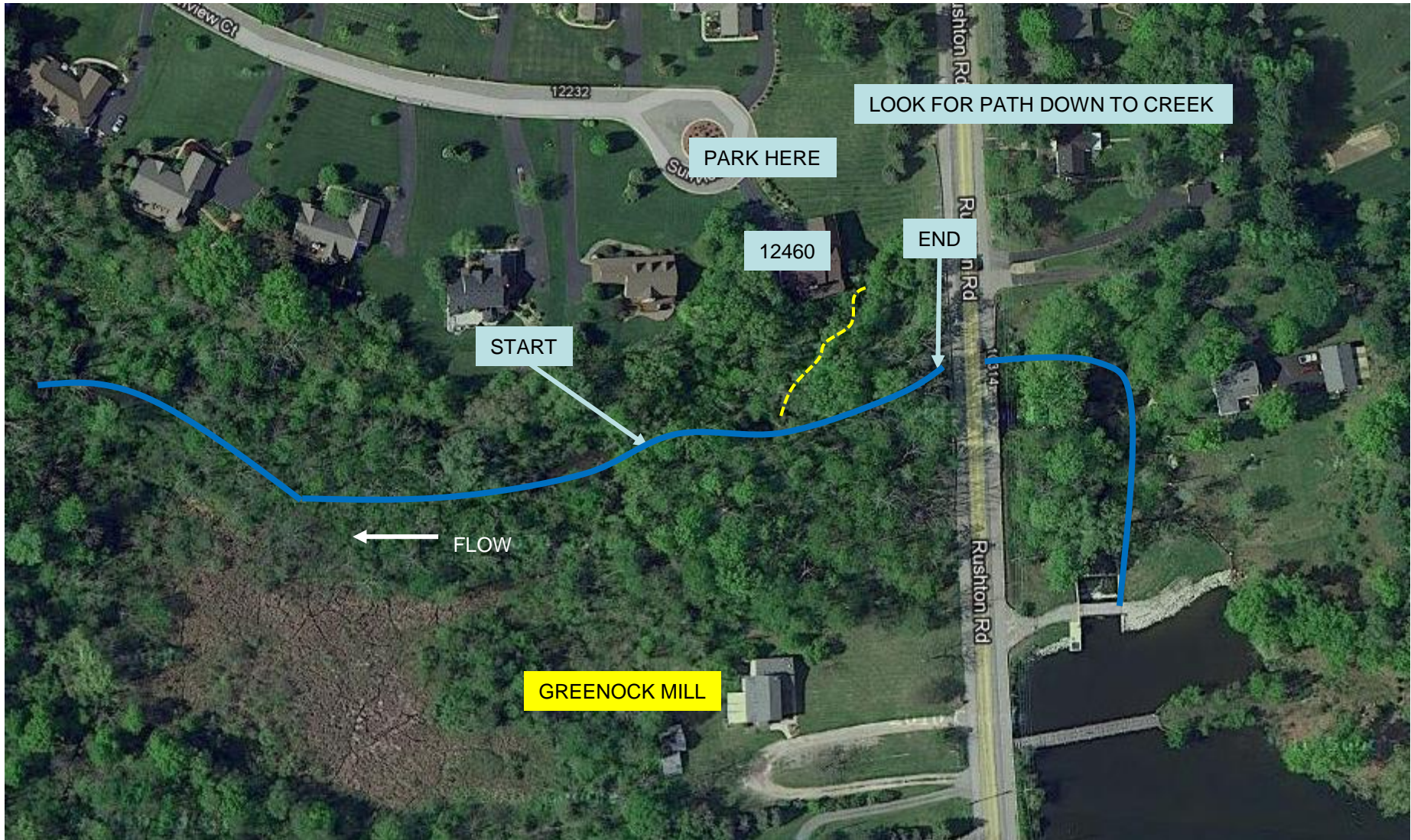


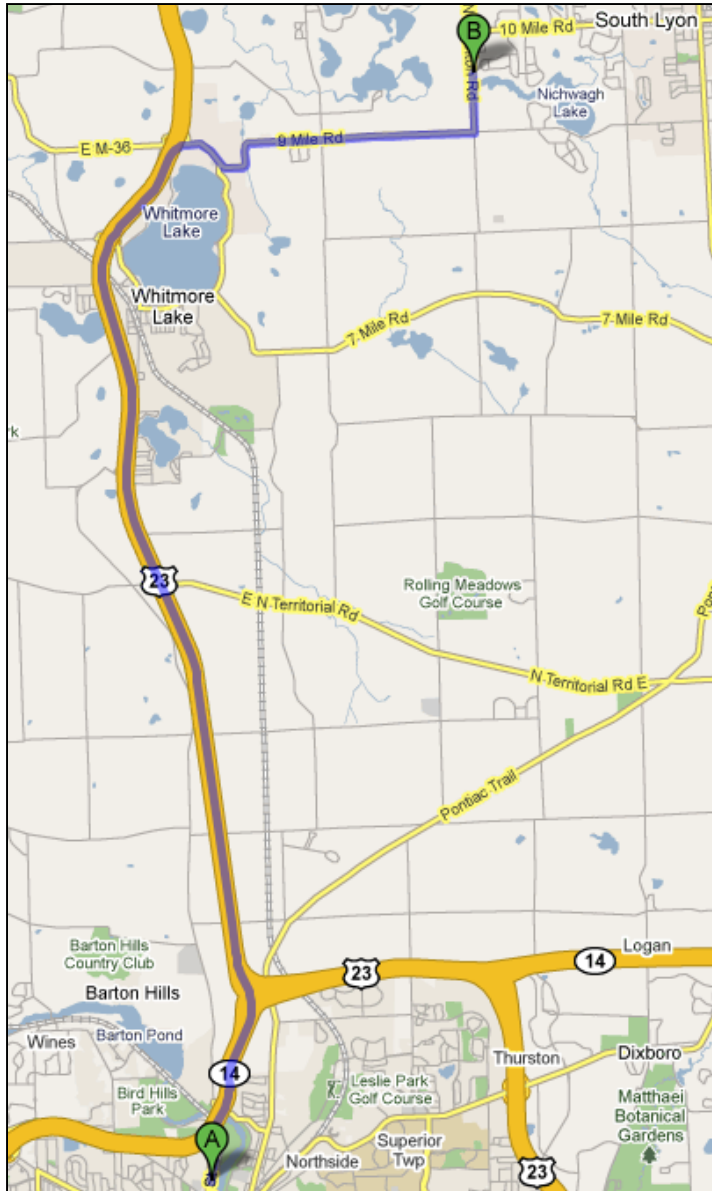
# Greenock Creek at Rushton Road Site Map

Approx. Lat & Long: 42.4527 -83.6964



# Greenock Creek at Rushton Road

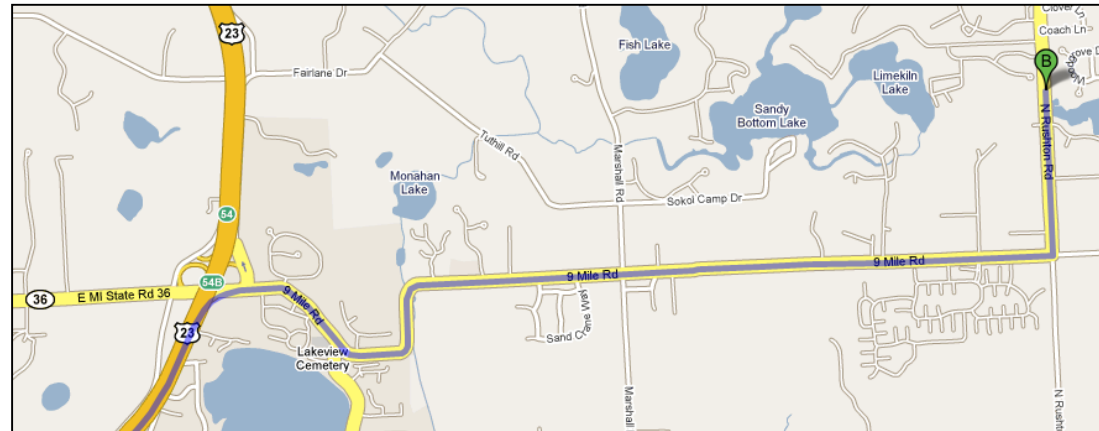
## Directions from the NEW Center



Overview of Trip

Start: 1100 N. Main Street, Ann Arbor

1. Head **north** on **N Main St/US-23** 0.4 mi
2. Take the ramp onto **MI-14 E** 1.3 mi
3. Take the exit on the **left** onto **US-23 N** toward **Flint/Brighton** 9.0 mi
4. Take exit **54 A** toward **S Lyon** 0.2 mi
5. Merge onto **9 Mile Rd** 3.2 mi
6. Turn **left** at **N Rushton Rd** 0.5 mi to Greenock Mill



Destination