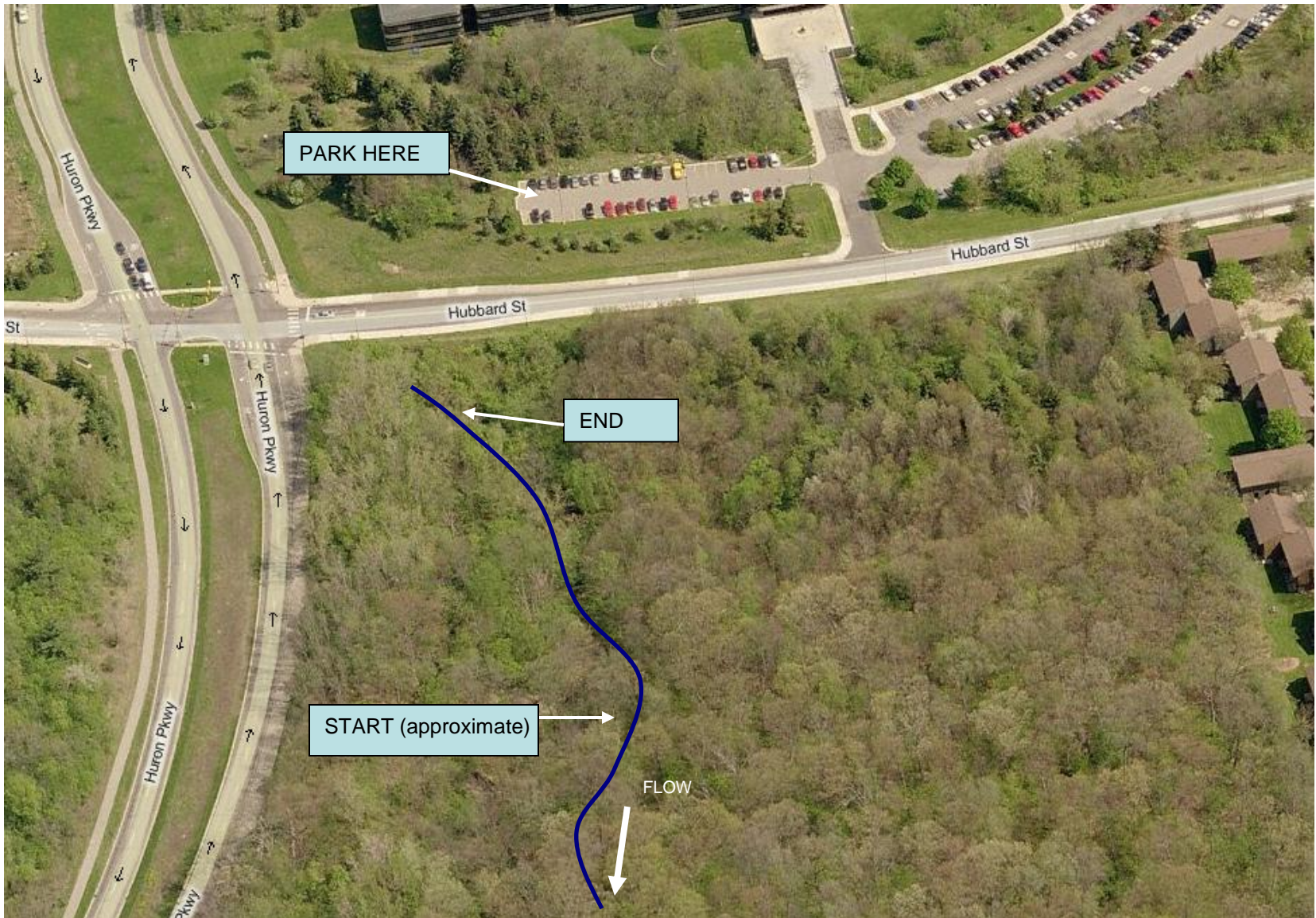


Millers Creek at Hubbard Street Site Map

Approx. Lat & Long: 42.2935 -83.7018





Protecting the river since 1965

Millers Creek at Hubbard Street

Directions from the NEW Center

1100 N Main Street, Ann Arbor, MI, 48104

1. Head **south** on **N Main St** toward **Depot St** 0.6 mi
2. Take the 3rd **left** onto **E Kingsley St** 0.2 mi
3. Turn **left** at **N Division St** 0.2 mi
4. Continue onto **Broadway St** 0.3 mi
5. Continue onto **Plymouth Rd** 1.2 mi
6. Turn **right** at **Murfin Ave** 0.2 mi
7. Turn **left** at **Hubbard Rd** 0.7 mi
8. Turn **left** to stay on **Hubbard Rd**
9. After you pass through Huron Parkway, park at the University of Michigan admin building to your left. Walk across the Hubbard Road to get to the creek (see other side).

