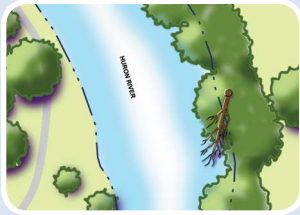


What's Going On?

Woody Debris Habitat – Frog Island, Riverside, and Waterworks Parks

Along these three Ypsilanti parks, fish habitat in the Huron River is very limited. Fish need a variety of habitats to thrive and reproduce. Fish need rest, which they get in deeper water because water flows more slowly at greater depths. Fish also need protection from animals that eat them like bigger fish, birds, and people. They survive by hiding under fallen trees and overhanging vegetation.

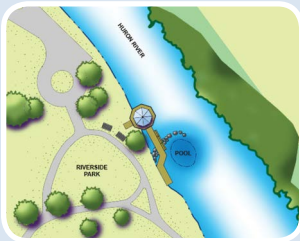


Hinged Trees

That's why we are felling about 20 trees into the river using a method called "hinging." We will cut the base of the tree 2-3 feet above the ground without completely cutting through the trunk. The tree will fall into the water but the bottom part of the tree will still be attached to its stump so it won't float away. This connection is the "hinge." To further secure the trunk, we are anchoring it to the bottom of the river.

These felled trees will provide habitat and cover for Huron River fish. Now they will have pockets of slow water that will allow them to rest from the strong current while hiding from predators.

Rock Vane and Fishing Pool – Riverside Park



Rock Vane

The gazebo is a prime attraction in Riverside Park, but the area around the gazebo is particularly poor for fishing. We are installing a rock vane to improve fish habitat within casting distance of the gazebo and boardwalk.

The rock vane structure will redirect water flow toward the center of the river and create a quiet protected area behind the vane. To further increase depth, some of the river bottom will be excavated.

This pool will support:



Small Mouth Bass

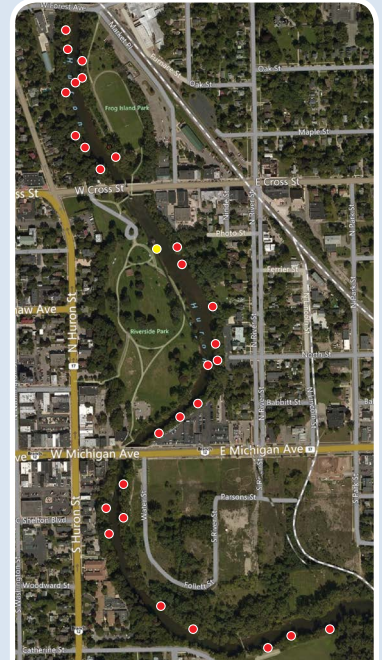


Rock Bass



Sucker

We're creating fish habitat!



LEGEND

- Hinged Tree Site
- Rock Vane Location



Funded by:

RiverUp!



Partners:



www.hrwc.org

For more information, contact project manager Paul Steen, Huron River Watershed Council, at psteen@hrwc.org or 734-769-5123 x601.