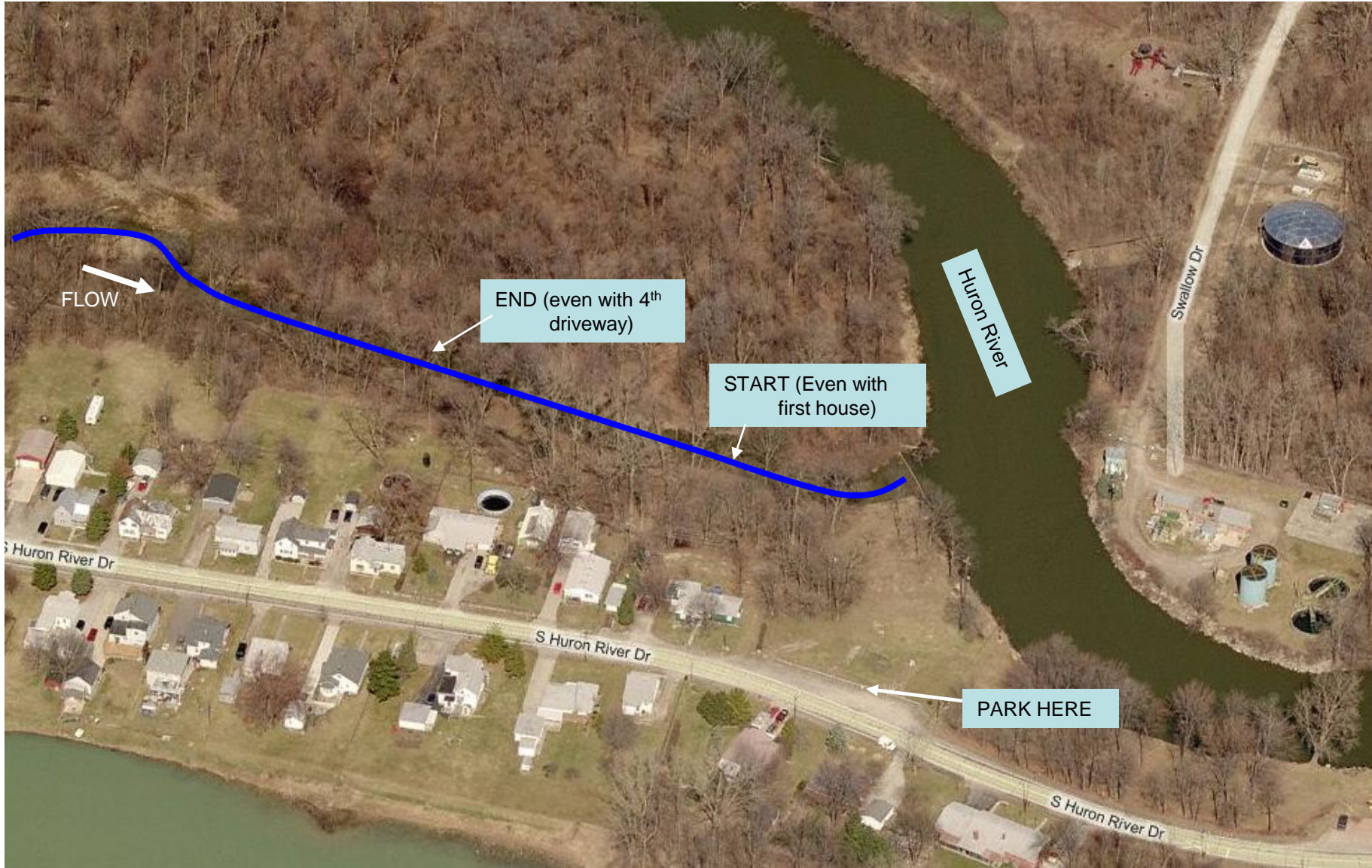


Bancroft-Noles Drain at Lebo Park

Site Map

Approx. Lat & Long: 42.0613 -83.2495





Huron
River
Watershed
Council

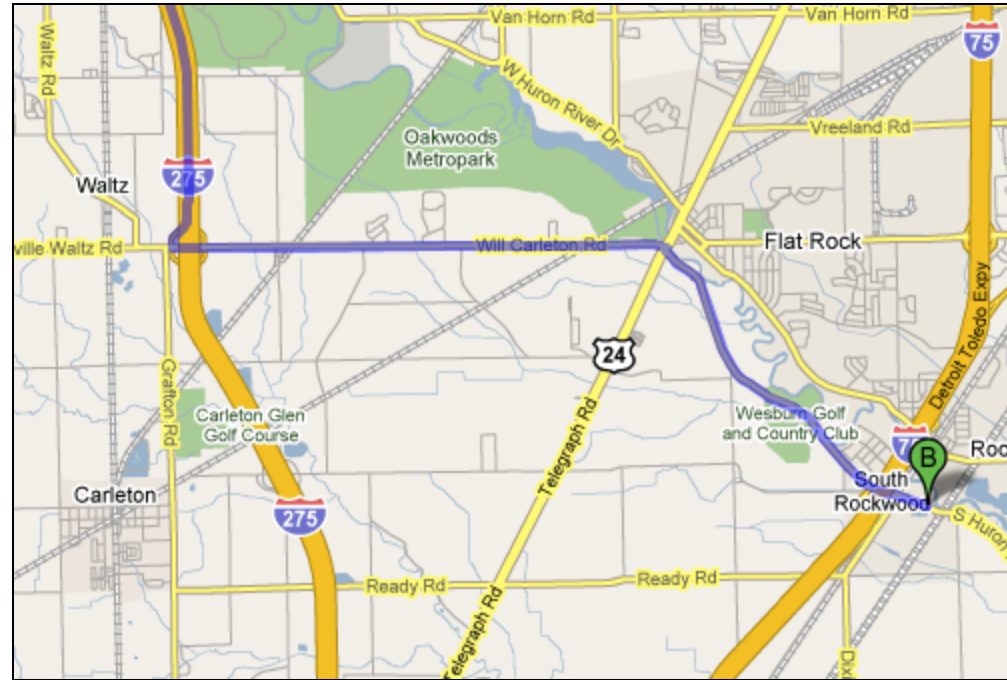
Protecting the river since 1965

Bancroft-Noles Drain at Lebo Park

Directions from the NEW Center

Start: 1100 N Main Street, Ann Arbor

1. Head **north** on **N Main St/US-23** toward **Lakeshore Dr**
0.4 mi
2. Take the ramp onto **MI-14 E** 1.7 mi
3. Merge onto **US-23 S** 8.6 mi
4. Take exit **35** for **I-94** 1.0 mi
5. Continue toward **I-94 E** and merge onto **I-94 E** 14.0 mi
6. Take exit **194A** to merge onto **I-275 S** 9.3 mi
7. Take exit **8** for **Will Carleton Rd** toward **Flat Rock** 0.5 mi
8. Turn **left** at **Will Carleton Rd** 4.4 mi
9. Turn **right** at **Telegraph Rd/US-24** 118 ft
10. Take the 1st **left** onto **S Huron River Dr** 3.4 mi



275-S to Destination

11. Pull into Lebo Park parking area on the left. If you get to the railroad trestle on S Huron River Drive, you've gone too far.
12. Follow the steps down to the park and head NW through the park to the tributary outlet.
13. Head upstream along a trail through the floodplain to the creek access point upstream of a significant tree fall.
14. Set up work area in the floodplain to the south of the creek.