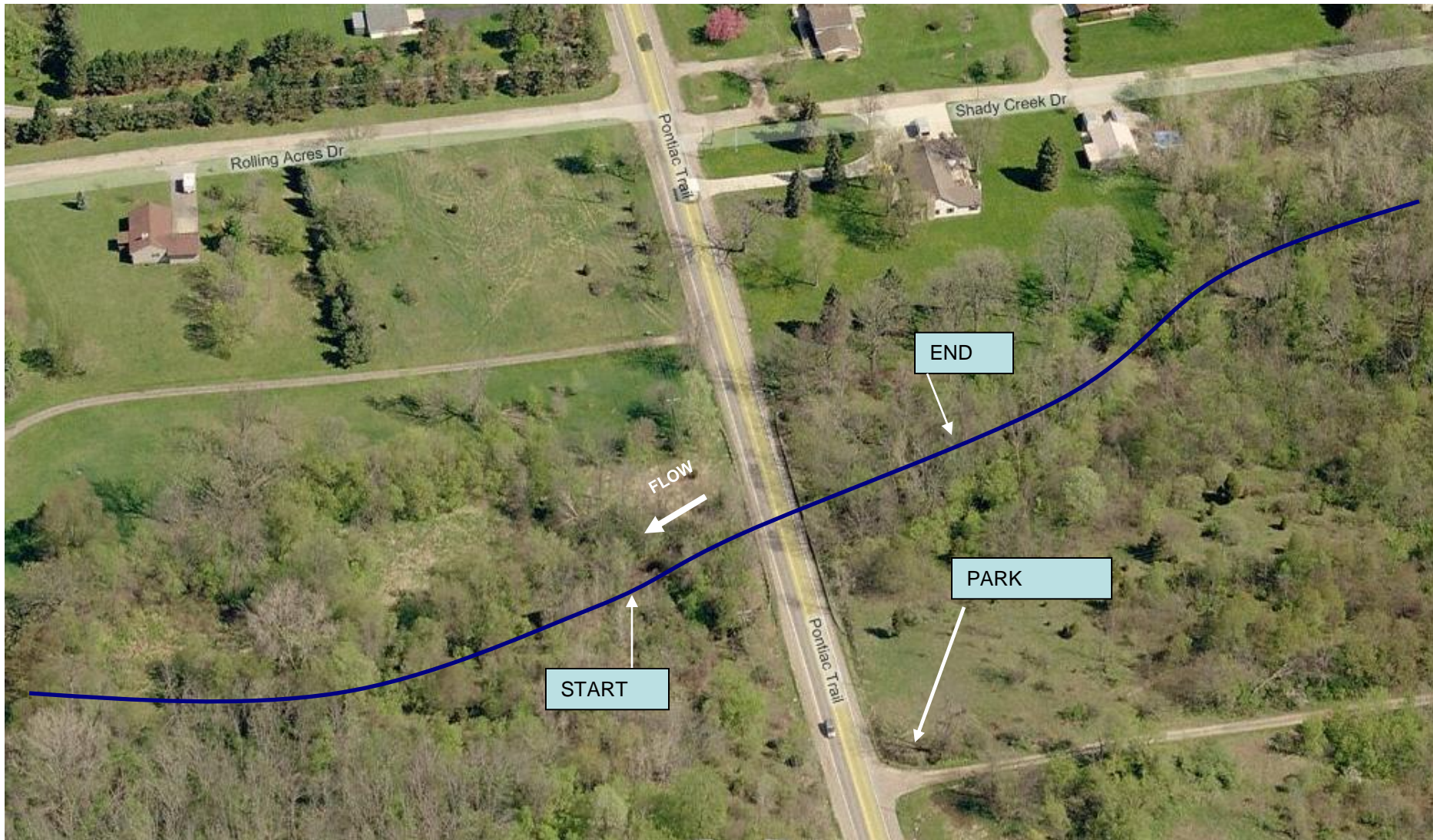


Davis Creek at Pontiac Trail Site Map

Approx. Lat & Long: 42.4891 -83.6532

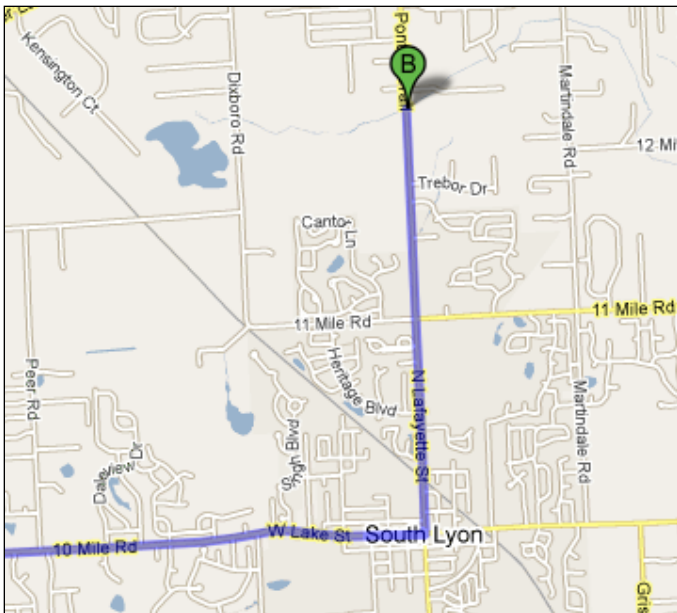


Davis Creek at Pontiac Trail

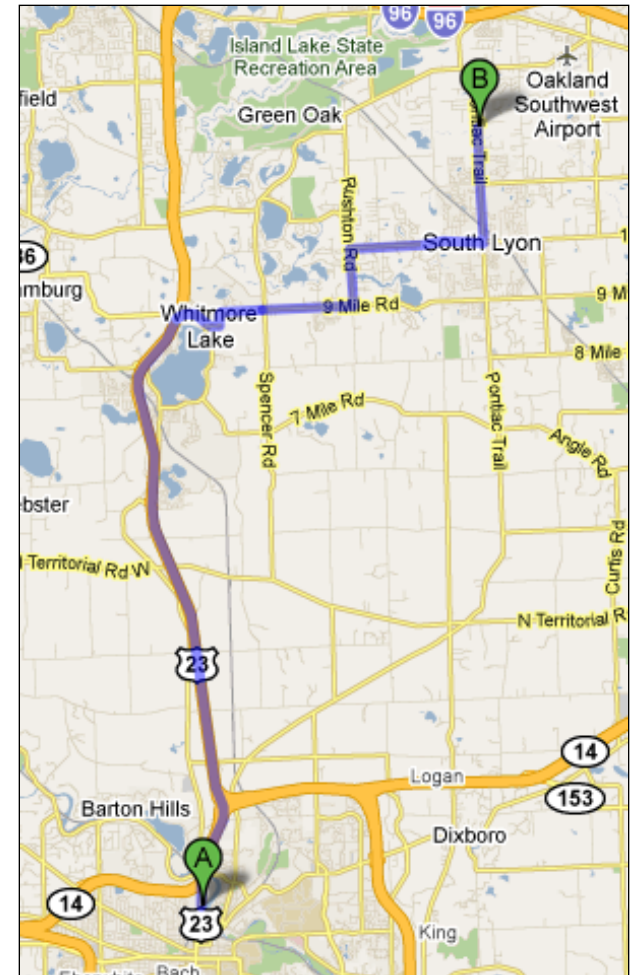
Directions from the NEW Center

Start: 1100 N Main St, Ann Arbor, MI 48104

1. Head **north** on **N Main St/US-23 BUS N** toward **Lake Shore Dr** 0.3 mi
2. Take the ramp onto **MI-14 E/US-23 BUS N** 1.3 mi
3. Take the exit on the **left** onto **US-23 N** toward **Brighton/Flint** 9.1 mi
4. Take exit **54A** toward **S Lyon** 0.2 mi
5. Merge onto **9 Mile Rd** 3.2 mi
6. Turn **left** at **Rushton Rd** 1.0 mi
7. Turn **right** at **10 Mile Rd** 2.3 mi
8. Turn **left** at **N Lafayette St** 1.0 mi
9. The stream is 1.9 miles north of this turn. You can park on the dirt road that is a little south of the creek (see picture).



Close-up of
Destination



Overview of Trip