

Port Creek at Armstrong Road Site Map

Approx. Lat & Long: 42.0742 -83.2843





Protecting the river since 1965

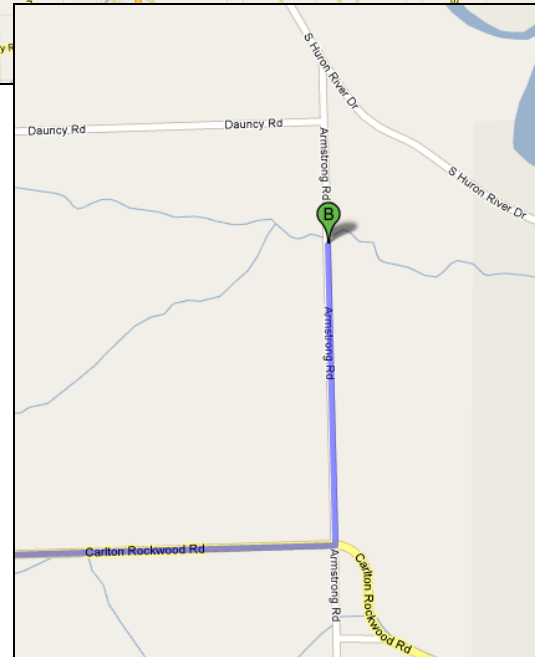
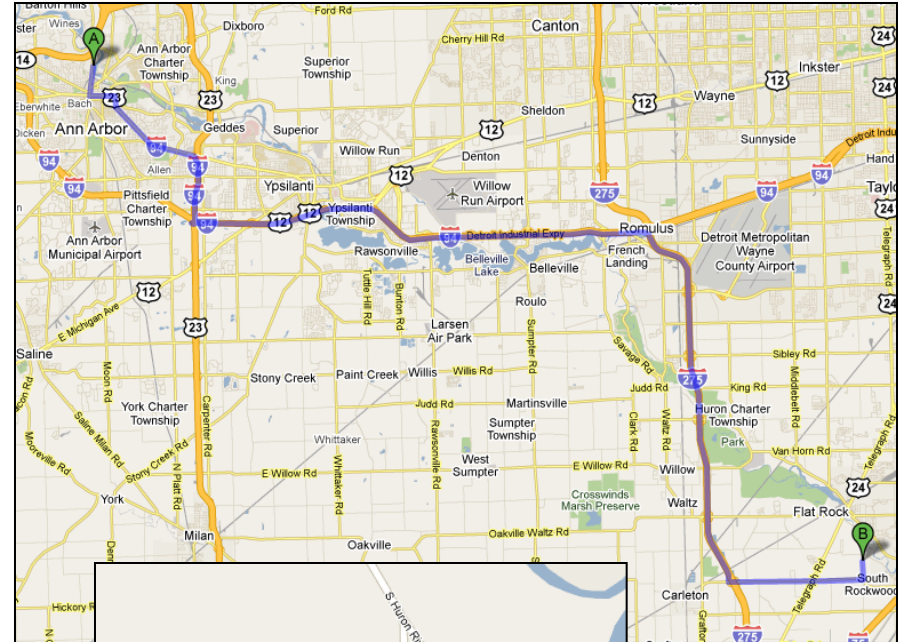
Port Creek at Armstrong Road

Directions from the NEW Center

Overview of Trip

Start : 1100 N. Main Street, Ann Arbor, MI 48104

1. Head **south** on **N Main St** 0.9 mi
2. Turn **left** at **E Huron St** 0.8 mi
3. Continue onto **Washtenaw Ave** 3.2 mi
4. Take the **US-23 S/I-94** ramp to **Toledo Detroit** 0.4 mi
5. Merge onto **I-94 BUS S/US-23 S** 1.1 mi
6. Take exit **35** for **I-94 E** 1.0 mi
7. Continue toward **I-94 E** and merge onto **I-94 E** 14.0 mi
8. Take exit **194A** to merge onto **I-275 S** toward **Toledo** 11.5 mi
9. Take exit **5** toward **S Rockwood/Carleton** 0.4 mi
10. Turn **left** at **Carlton Rockwood Rd** 4.1 mi
11. Turn **left** at **Armstrong Rd.** 0.5 mi
12. Park on the road near the creek. Tell the neighbors at the nearby house (13519) that you are with HRWC and ask permission to access the creek (you should collect from the south side of the river, which is on their property).



Close-up of Destination