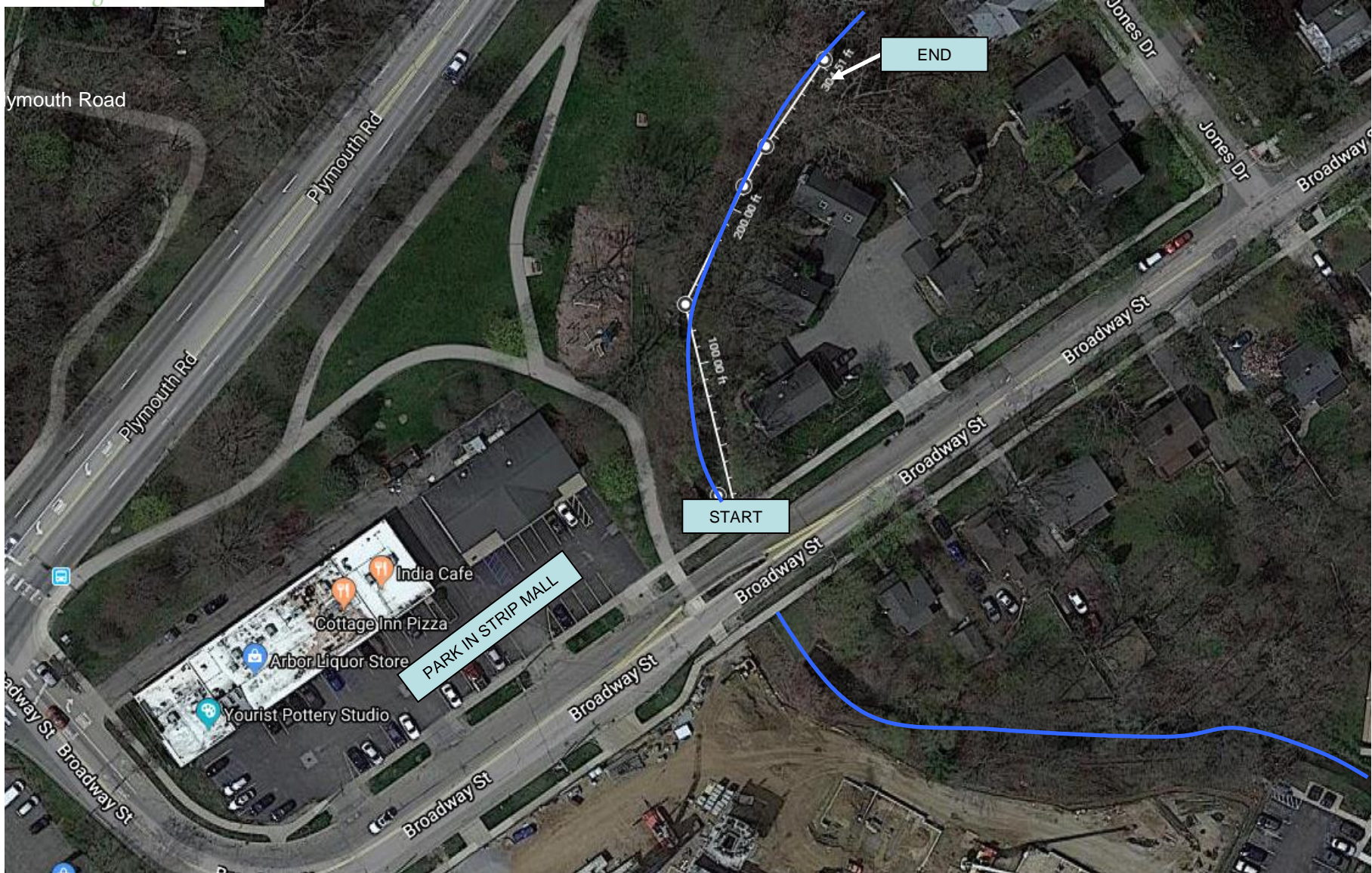




Protecting the river since 1965

# Traver Creek at Broadway Site Map

Parking area approx. Lat & Long:	42.2907	-83.7366
Site approx. Lat & Long:	42.2909	-83.7361





Protecting the river since 1965

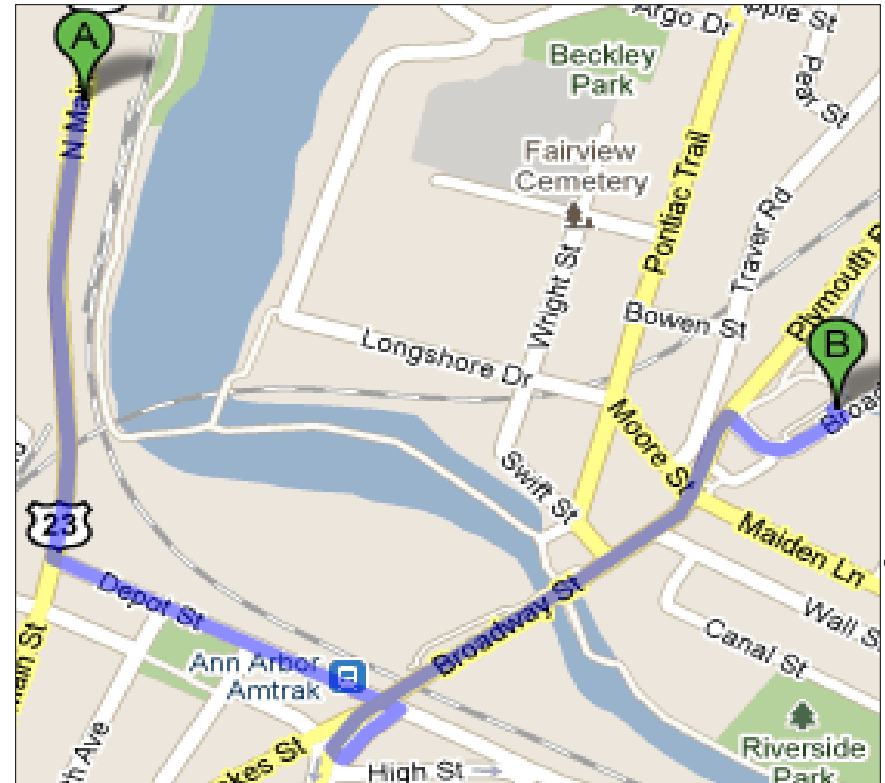
# Traver Creek at Broadway

## Driving Directions NEW Center to Traver Creek

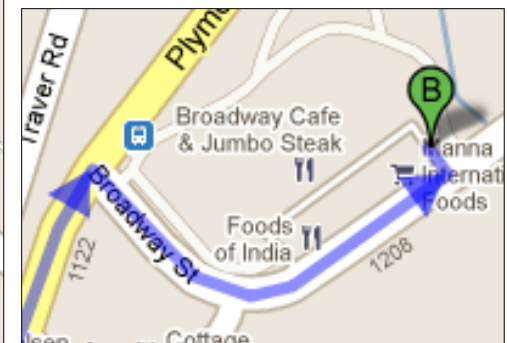
**Start: 1100 N Main St**

**Driving Distance : 1.2 mi Driving time: 4 mins**

1. South on **N Main St** toward **Depot St** 0.4 mi
2. Take the 1st **left** onto **Depot St** 0.3 mi
3. Take the 3rd right onto **Carey St** 302 ft
4. Take the 1st **right** toward **N Division St** 56 ft
5. Turn right at **N Division St** 184 ft
6. Continue onto **Broadway St** 0.3 mi
7. Continue onto **Plymouth Rd** 361 ft
8. Turn right at **Broadway St** 0.1 mi
9. Park in the strip mall on your left .



Overview of the trip



Nearing Destination